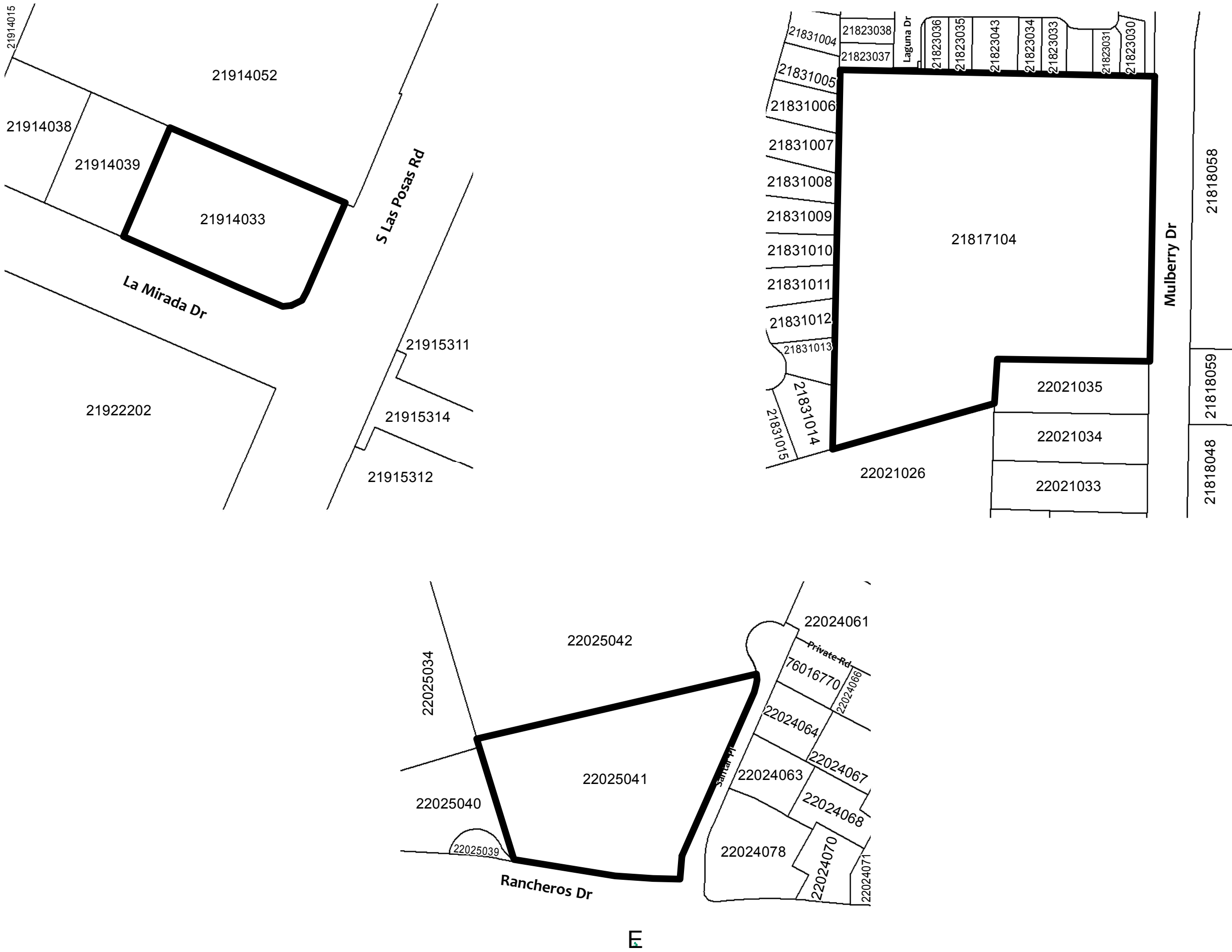
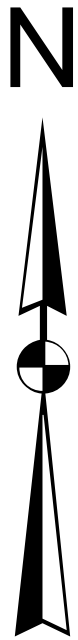


BOUNDARY MAP

COMMUNITY FACILITIES DISTRICT NO. 2011-01
(CONGESTION MANAGEMENT)
CITY OF SAN MARCOS, COUNTY OF SAN DIEGO, STATE OF CALIFORNIA

ANNEXATION No. 7
EXHIBIT "B"



FILED IN THE OFFICE OF THE CITY CLERK THIS ____ DAY OF _____
2015.

PHILLIP SCOLICK
CITY CLERK
CITY OF SAN MARCOS, STATE OF CALIFORNIA

I HERBY CERTIFY THAT THE MAP SHOWING BOUNDARIES AND TERRITORIES TO BE
ANNEXED TO COMMUNITY FACILITIES DISTRICT NO. 2011-01, CITY OF SAN MARCOS, COUNTY
OF SAN DIEGO, STATE OF CALIFORNIA, WAS APPROVED BY THE CITY COUNCIL OF THE
CITY OF SAN MARCOS AT A REGULAR MEETING THEREOF HELD ON THE 13TH DAY
OF JANUARY, 2015 BY ITS RESOLUTION NO. 2015-_____.

PHILLIP SCOLICK
CITY CLERK
CITY OF SAN MARCOS, STATE OF CALIFORNIA

FILE NO. 2015-_____

FILED THIS _____ DAY OF _____, 2015 AT _____
O'CLOCK IN BOOK _____, PAGE _____ OF MAPS OF ASSESSMENT AND COMMUNITY
DISTRICTS IN THE OFFICE OF THE COUNTY RECORDER OF THE COUNTY OF SAN DIEGO,
STATE OF CALIFORNIA.

ERNEST J. DRONENBURG JR.
COUNTY RECORDER

BY: DEPUTY COUNTY RECORDER

LEGEND

219XXXXX

ANNEXATION BOUNDARY

ASSESSOR'S PARCEL NUMBER