

HARDSCAPE LEGEND

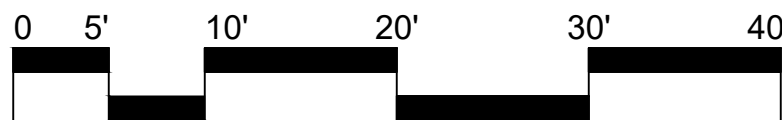
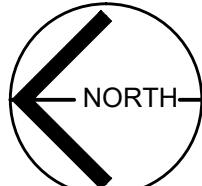
SYMBOL	DESCRIPTION
	DECOMPOSED GRANITE, DESERT GOLD OR PARADISE GOLD, BY SOUTHWEST BOULDER & STONE OR APPROVED EQUAL, SEE DETAIL C-001, C-002
	CONCRETE MOW CURB – 6"W X 8"D, SDL-103 TYPE A, SEE DETAIL C-002
	4' CHAIN-LINK FENCE, BY MASTER HALCO, SEE DETAIL C-005, C-006, & C-013
	ECRU BENCH BOULDERS, BY SOUTHWEST BOULDER & STONE, (7 TOTAL), COLOR: CREAM AND BEIGE WITH HINTS OF GOLD, SEE DETAIL C-003
	PET WASTE STATION, #1003-L, BY DOGIPOT, (1 TOTAL), SEE DETAIL C-010
	BOTTLE FILLER LESS DRINKING FOUNTAIN, MGYM 74-A006, BY MURDOCK OR PER CITY'S DIRECTION, (2 TOTAL), SEE DETAIL C-011& C-014
	DOG PARK SIGN, BY MYERS AND SONS HI-WAY SAFETY, SEE DETAILS C-007, C-008.
	DOG PARK RULE SIGN, BY MYERS AND SONS HI-WAY SAFETY, SEE DETAILS C-009.
	PICNIC TABLE, Q-LBT-96PT, BY QCP, (3 TOTAL), MODIFIED WITH SKATE DETERRENT NOTCHES. SEE DETAIL C-012
	ADA PICNIC TABLE, Q - LBT102PTADA, BY QCP, (1 TOTAL), MODIFIED WITH SKATE DETERRENT NOTCHES. SEE DETAIL C-015

BOULDER SCHEDULE:

PRODUCT	SUPPLIER	SYMBOL	DESCRIPTION	QTY	DETAIL
DESERT SAND BOULDERS; GOLDEN TAN WITH BROWN OVERTONES	SOUTHWEST BOULDER & STONE		3' BOULDER	6	C-004
			4' BOULDER	3	



DIAL TOLL FREE
1-800-422-4133
AT LEAST TWO DAYS
BEFORE YOU DIG



UNDERGROUND SERVICE ALERT OF SOUTHERN CALIFORNIA

VALLECITOS WATER DISTRICT APPROVAL OF THESE IMPROVEMENT PLANS DOES NOT COMMIT DISTRICT TO SUPPLYING WASTEWATER SERVICES TO THIS PROJECT OR GUARANTEE THAT WATER WILL BE AVAILABLE By: JASON P. HUBBARD, P.E. DISTRICT ENGINEER R.C.E. NO. 60317 exp.: 6/30/2024 APPROVAL VALID FOR EIGHTEEN (18) MONTHS FROM DATE SIGNED	SAN MARCOS FIRE PROTECTION DISTRICT By: JASON NAILON, FIRE MARSHAL Date: _____ REQUIRED FIRE HYDRANT FLOW _____ *(GPM) APPROVED FIRE HYDRANT FLOW _____ *(GPM) □ APPROVED FIRE FLOW INCLUDES MITIGATION MEASURES *GALLON PER MINUTE VALLECITOS WATER DISTRICT IS NOT RESPONSIBLE FOR MAINTENANCE, REPAIR, OR REPLACEMENT OF FIRE HYDRANTS UNLESS SPECIFIED UNDER SEPARATE AGREEMENT WITH THE JURISDICTIONAL FIRE AGENCY
VALLECITOS WATER DISTRICT PRESSURE ZONE: _____ HGL _____ PUMP ZONE: _____	VWD AS-BUILT By: NAME (ENGINEER OF WORK) Date: _____ R.C.E. NO. _____ exp.: 6/30/20XX

CONSTRUCTION NOTES:

- (H-1) 4' CHAIN LINK FENCE WITH 6" MOW CURB, PER DETAILS C-005, C-006.
- (H-2) 4' CHAIN-LINK FENCE ADJACENT TO CONCRETE WALKWAY: THE CONTRACTOR IS RESPONSIBLE FOR ANY DAMAGE TO BELOW-GRADE UTILITIES AND IRRIGATION SYSTEMS. ALL SPRINKLER HEADS AND IRRIGATION PIPES MUST BE PROTECTED IN PLACE OR ADJUSTED PER THE OWNER'S DIRECTION TO PREVENT DAMAGE CAUSED BY THE FENCE INSTALLATION. ANY DAMAGES RESULTING FROM THE INSTALLATION WILL BE THE CONTRACTOR'S FULL RESPONSIBILITY TO REPAIR AND REPLACE WITH LIKE-KIND MATERIALS, AT NO COST TO THE OWNER.
- (H-3) 4' CHAIN-LINK FENCE ADJACENT TO EXISTING MOW CURB: THE CONTRACTOR IS RESPONSIBLE FOR PROTECTING ALL EXISTING TREES IN PLACE. ANY DAMAGE TO EXISTING TREES OR SHRUBS RESULTING FROM THE FENCE INSTALLATION WILL BE THE CONTRACTOR'S FULL RESPONSIBILITY TO REPLACE WITH LIKE-KIND MATERIALS, AT NO COST TO THE OWNER.
- (H-4) EXISTING MANIFOLDS TO REMAIN: THE CONTRACTOR MUST VERIFY AND ENSURE ADEQUATE SPACING FOR THE CHAIN-LINK FENCE INSTALLATION. THE CONTRACTOR SHALL ADJUST THE FENCE INSTALLATION AS NECESSARY TO PROTECT EXISTING MANIFOLDS AND ENSURE THE EXISTING IRRIGATION SYSTEMS CONTINUE TO FUNCTION PROPERLY THROUGHOUT THE DURATION OF THE PROJECT.
- (H-5) DOG PARK SIGNS: THE CONTRACTOR IS RESPONSIBLE FOR COORDINATING THE DOG PARK SIGN LOCATION WITH THE CITY AND INSTALLING THE SIGNS ACCORDING TO THE CITY'S OR ITS REPRESENTATIVE'S DIRECTION. THE PROPOSED DOG PARK SIGN STYLE AND LOCATION MUST MATCH THE EXISTING DOG PARK. FINAL APPROVAL WILL BE BASED ON THE CITY'S DIRECTION.

LANDSCAPE ARCHITECT OF WORK	
By: _____	
License No.: _____ exp.: _____	
Date: _____	
RECOMMENDED FOR APPROVAL	
By: Andrew Proud, Landscape Inspection Supervisor	
Date: _____	
APPROVED FOR CONSTRUCTION	BENCH MARK
By: Isaac Etchamendy, City Engineer	Description: _____
R.C.E.: _____ exp.: _____	Location: _____
Date: _____	Record From: _____ Datum: _____

POTABLE WATER LEGEND

SYMBOL	DESCRIPTION
	EXISTING DRINKING FOUNTAIN SUPPLY LINE
	PET DRINK FOUNTAIN WATER LINE, 1-1/2" PVC PIPE SCHEDULE 40
	ISOLATION BALL VALVE - NIBCO T-585-70 TWO-PIECE BRONZE FULL PORT BALL VALVE. SEE DETAIL I-9

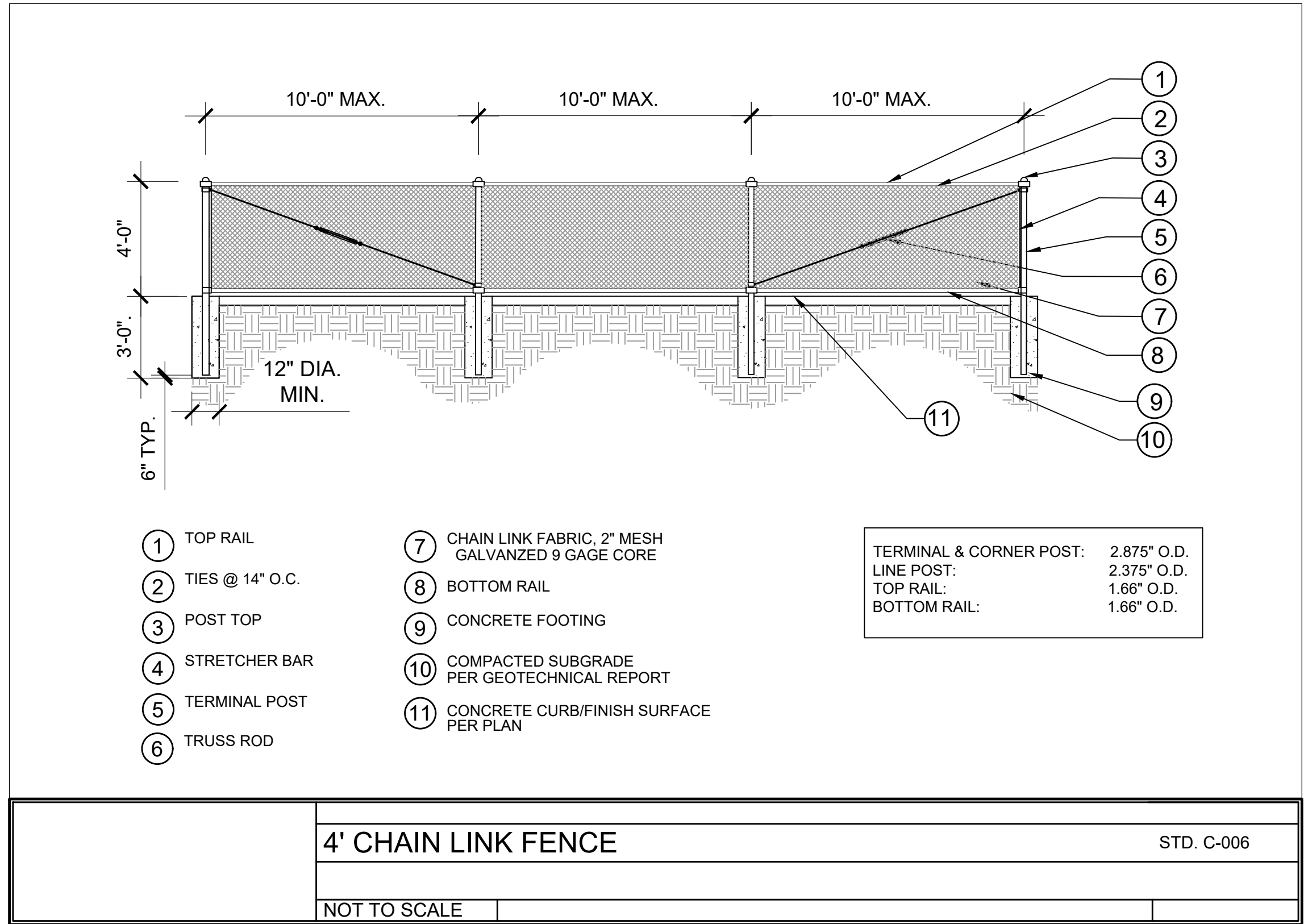
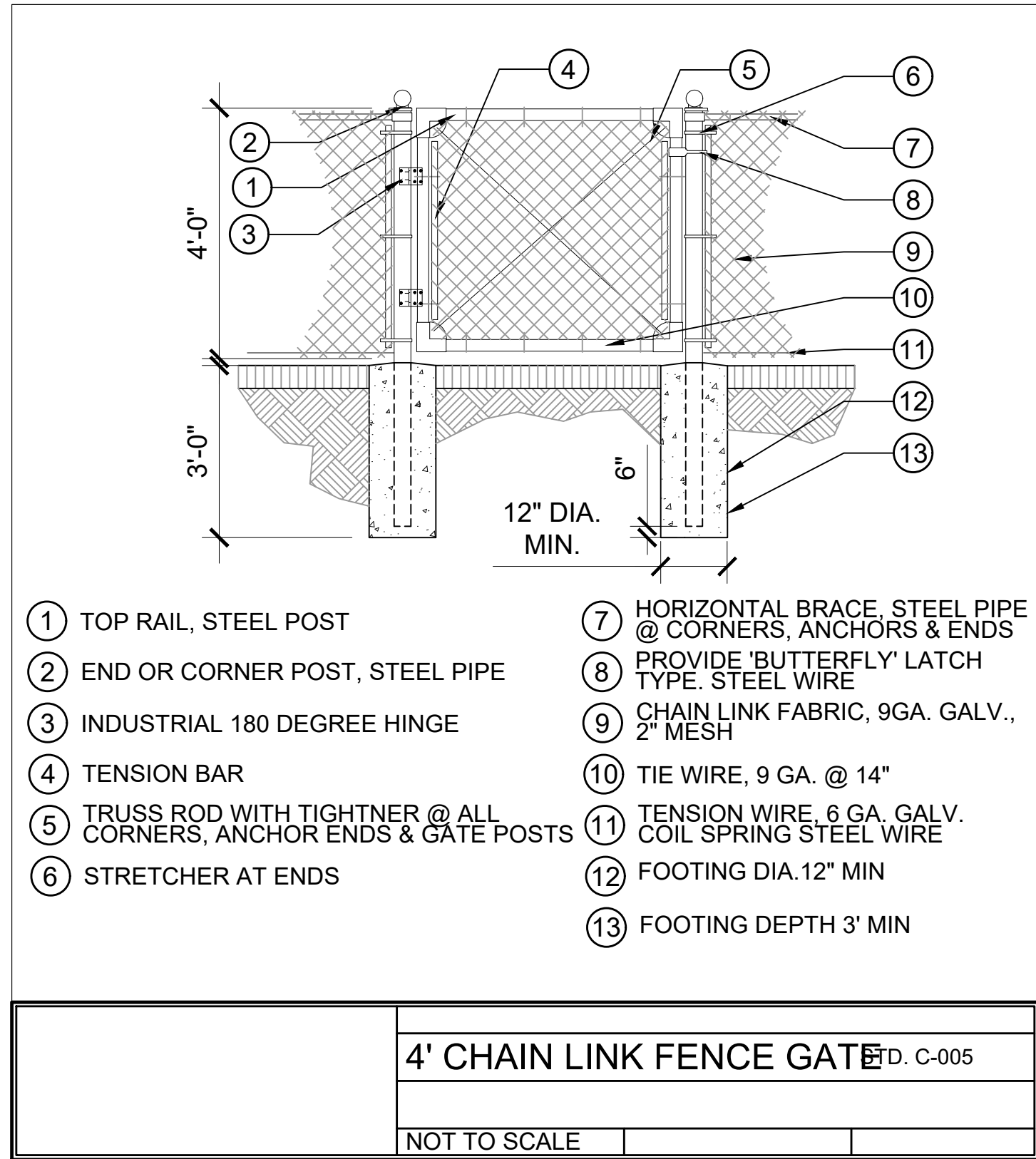
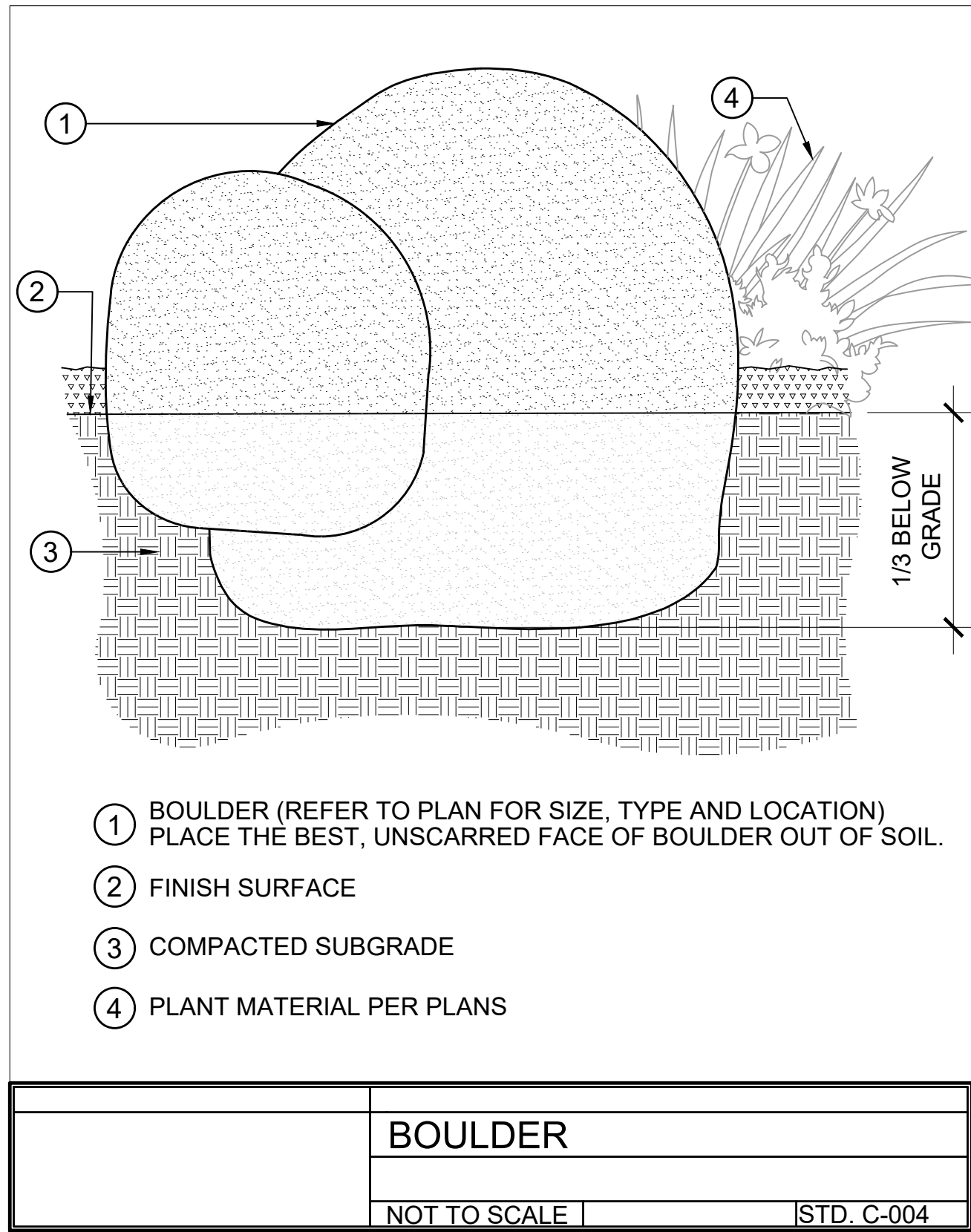
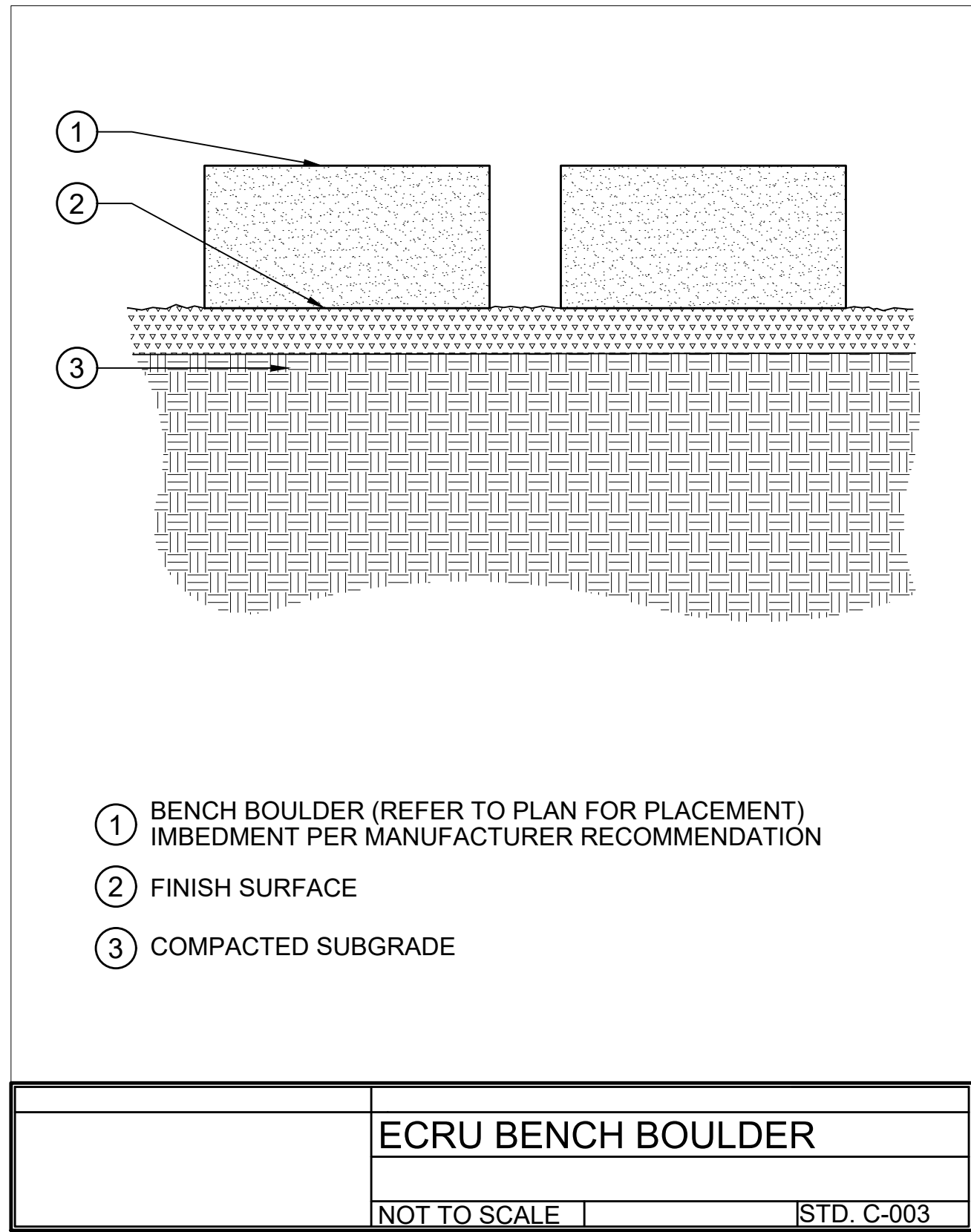
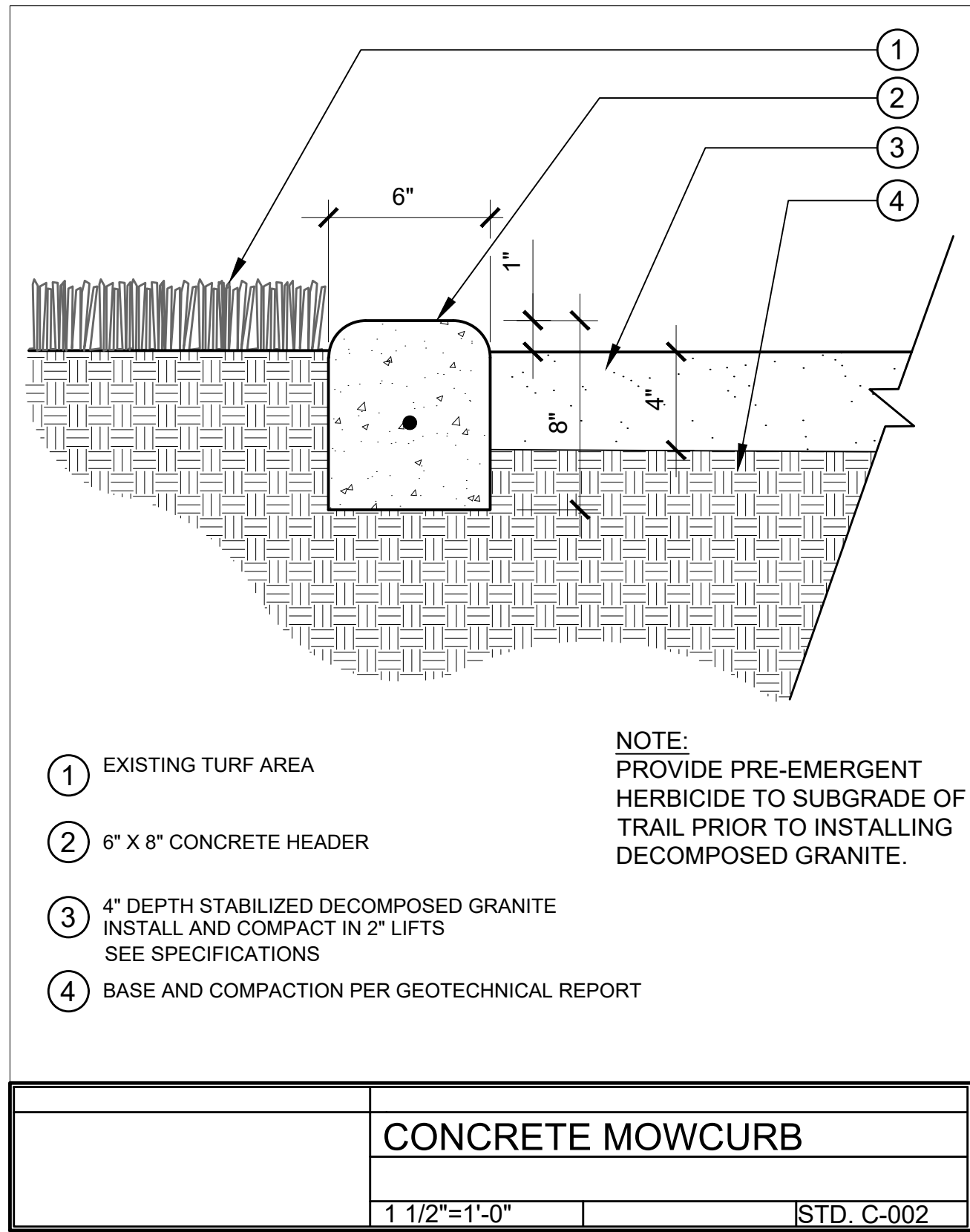
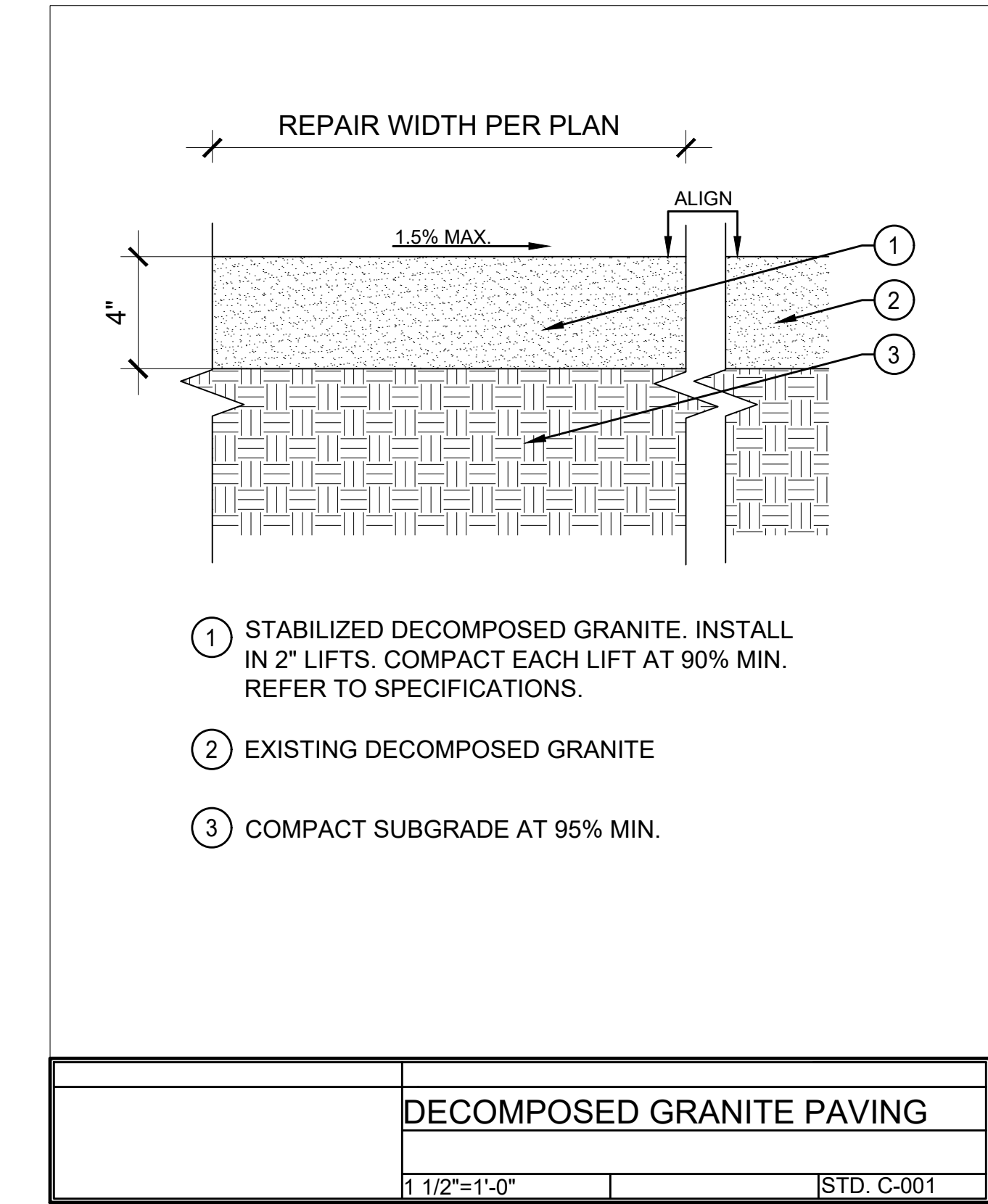
DRINKING WATER LINE NOTES:

- (W-1) EXISTING RESTROOM DRINKING FOUNTAIN WATER SUPPLY LINE AND CONNECTION TO PROPOSED DRINKING WATER LINE: THE CONTRACTOR SHALL LOCATE THE EXISTING DRINKING WATER SUPPLY LINE AT THE APPROXIMATE LOCATION. ONCE IDENTIFIED, THE CONTRACTOR SHALL CONNECT THE PROPOSED DRINKING WATER LINE TO THE EXISTING LINE USING APPROPRIATE FITTINGS, FOLLOWED BY INSTALLATION OF AN ISOLATION BALL VALVE AS SHOWN ON THE PLANS. ANY DAMAGE CAUSED DURING THE INSTALLATION SHALL BE THE SOLE RESPONSIBILITY OF THE CONTRACTOR AND MUST BE REPAIRED AT NO COST TO THE OWNER.
- (W-2) DRINKING FOUNTAIN (WITH ATTACHED PET FOUNTAIN) WATER LINE: THE CONTRACTOR SHALL BE RESPONSIBLE FOR INSTALLING THE PIPE AT A MINIMUM DEPTH OF 18" BELOW GRADE. WHEN CROSSING ANY HARDSCAPE, DECOMPOSED GRANITE, OR CONCRETE HEADER, THE CONTRACTOR SHALL COORDINATE EXACT SLEEVE OR CONDUIT LOCATIONS TO ENSURE PROTECTION OF THE WATER LINE. THE CONTRACTOR SHALL ALSO BE RESPONSIBLE FOR REPAIRING ANY DAMAGE CAUSED DURING INSTALLATION USING LIKE-KIND MATERIALS.
- (W-3) DRINKING FOUNTAINS W/ ATTACHED PET FOUNTAINS: THE CONTRACTOR IS RESPONSIBLE FOR CONNECTING THE DRINKING WATER LINE TO THE PROPOSED PET FOUNTAINS. A THIRD-PARTY TEST REPORT IS REQUIRED TO CONFIRM THE DRINKING WATER QUALITY.
- (W-4) ISOLATION BALL VALVE: THE CONTRACTOR IS RESPONSIBLE FOR IDENTIFYING THE

GENERAL NOTES:

- THESE PLANS WERE PREPARED USING BASE INFORMATION PREPARED BY NOVA ENGINEERING. THE CONTRACTOR IS RESPONSIBLE FOR VERIFYING THE ACCURACY OF THIS BASE COMPARED TO ACTUAL FIELD CONDITIONS PRIOR TO ORDERING MATERIALS AND/OR BEGINNING WORK AND IMMEDIATELY NOTIFYING THE LANDSCAPE ARCHITECT OF ANY DISCREPANCIES. IN THE EVENT THAT THE CONTRACTOR FAILS TO VERIFY THE ACCURACY OF THE BASE INFORMATION AND/OR FAILS TO IMMEDIATELY NOTIFY THE LANDSCAPE ARCHITECT OF DISCREPANCIES PRIOR TO ORDERING MATERIALS AND/OR BEGINNING WORK, THEN THE CONTRACTOR ASSUMES FULL RESPONSIBILITY FOR ANY AND ALL ADDITIONAL LABOR AND MATERIALS AS DIRECTED BY THE LANDSCAPE ARCHITECT TO RESOLVE SUCH DISCREPANCIES AT NO ADDITIONAL COST TO THE OWNER.
- THE CONTRACTOR IS RESPONSIBLE FOR DETERMINING THE EXACT LOCATION OF ALL EXISTING UTILITIES PRIOR TO COMMENCING WORK. THE CONTRACTOR SHALL ASSUME FULL RESPONSIBILITY FOR ANY AND ALL DAMAGES WHICH OCCUR DUE TO THE CONTRACTOR'S FAILURE TO LOCATE AND PRESERVE ANY AND ALL UNDERGROUND UTILITIES, AT NO ADDITIONAL COST TO THE OWNER.
- THE CONTRACTOR SHALL ASSUME FULL RESPONSIBILITY FOR REPLACING ANY EQUIPMENT AND/OR MATERIALS OUTSIDE OF THE LIMIT OF WORK, WHICH ARE DAMAGED DURING CONSTRUCTION WITH MATERIALS LIKE-KIND, AT NO ADDITIONAL COST TO THE OWNER.
- REFER TO THE CONSTRUCTION DETAILS AND SPECIFICATIONS FOR INSTALLATION AND EXECUTION PROCEDURES AND FOR MAINTENANCE REQUIREMENTS.

LANDSCAPE ARCHITECT OF WORK AS-BUILT CERTIFICATE AS THE LANDSCAPE ARCHITECT OF WORK, I HEREBY CERTIFY THAT, TO THE BEST OF MY KNOWLEDGE AND BELIEF, THE IMPROVEMENTS SHOWN ON THIS SET OF CONSTRUCTION PLANS, SHEET XXXX THROUGH SHEET XXXX, HAVE BEEN INSTALLED AND CONSTRUCTED IN SUBSTANTIAL CONFORMANCE WITH THESE AS-BUILT PLANS, INCLUDING ALL APPROPRIATE STANDARDS AND ANY DISCRETIONARY APPROVAL(S) FOR THE PROJECT DATE: 12/08/2025 BRETT ALLEN, LIA License No. 6595, EXP. 12/31/2025		INSPECTED AND RECOMMENDED FOR ACCEPTANCE Public Works Inspector Date APPROVED AS RECORD PLAN ISAAC ETCHAMENDY 81294 9/30/2026 DATE: _____
CITY OF SAN MARCOS LANDSCAPE PLANS FOR: SAN ELJO HILLS PARK - DOG PARK HARDSCAPE PLAN		City Drawing No. YXXX-XXXX PROJECT NO. SDPXX-XXXX MF XXXX Sheet 4 of 16 FOR APPROVAL



DIAL TOLL FREE
1-800-422-4133
AT LEAST TWO DAYS
BEFORE YOU DIG

UNDERGROUND SERVICE ALERT OF SOUTHERN CALIFORNIA

VALLECITOS WATER DISTRICT		SAN MARCOS FIRE PROTECTION DISTRICT	
APPROVAL OF THESE IMPROVEMENT PLANS DOES NOT COMMIT DISTRICT TO SUPPLYING WASTEWATER SERVICES TO THIS PROJECT OR GUARANTEE THAT WATER WILL BE AVAILABLE		By: JASON NAILON, FIRE MARSHAL Date: _____	
By: JASON P. HUBBARD, P.E. District Engineer R.C.E. NO. 60317 exp.: 6/30/2024		REQUIRED FIRE HYDRANT FLOW _____ (GPM)	
APPROVAL VALID FOR EIGHTEEN (18) MONTHS FROM DATE SIGNED		APPROVED FIRE HYDRANT FLOW _____ (GPM)	
VALLECITOS WATER DISTRICT		VWD AS-BUILT	
PRESSURE ZONE: _____ HGL _____		By: NAME (ENGINEER OF WORK) Date: _____	
PUMP ZONE: _____		R.C.E. NO. _____ exp.: 6/30/20XX	

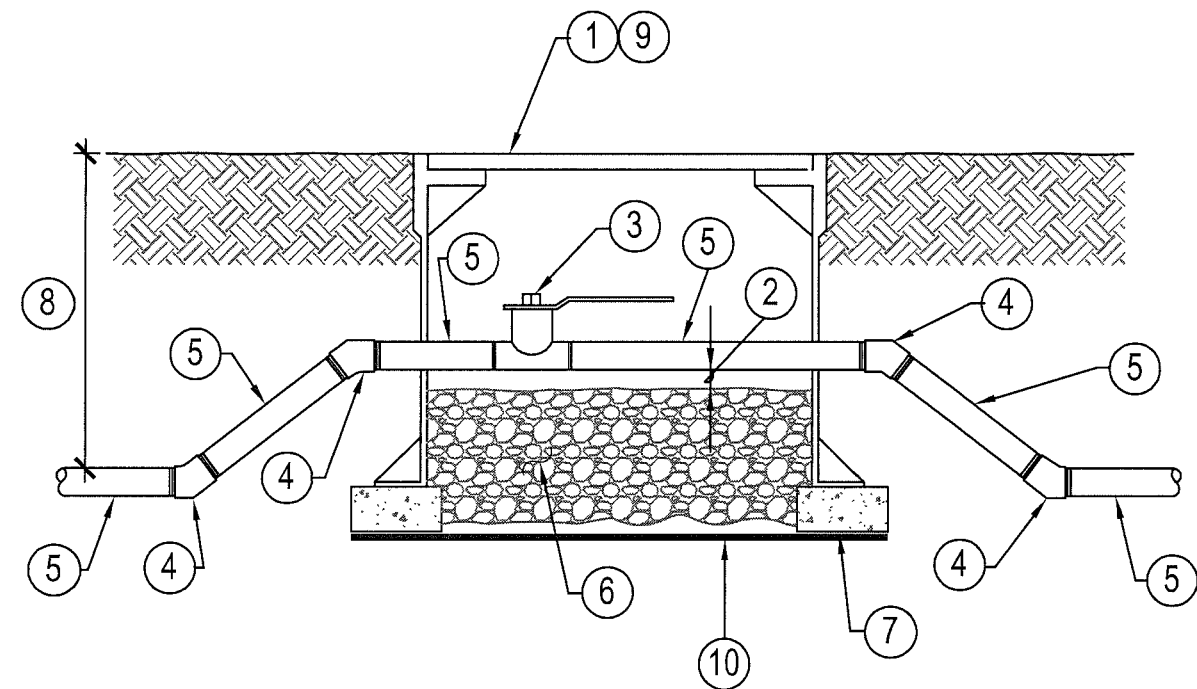
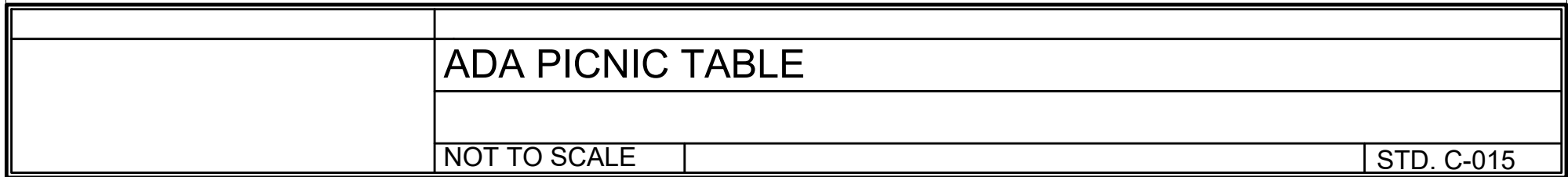
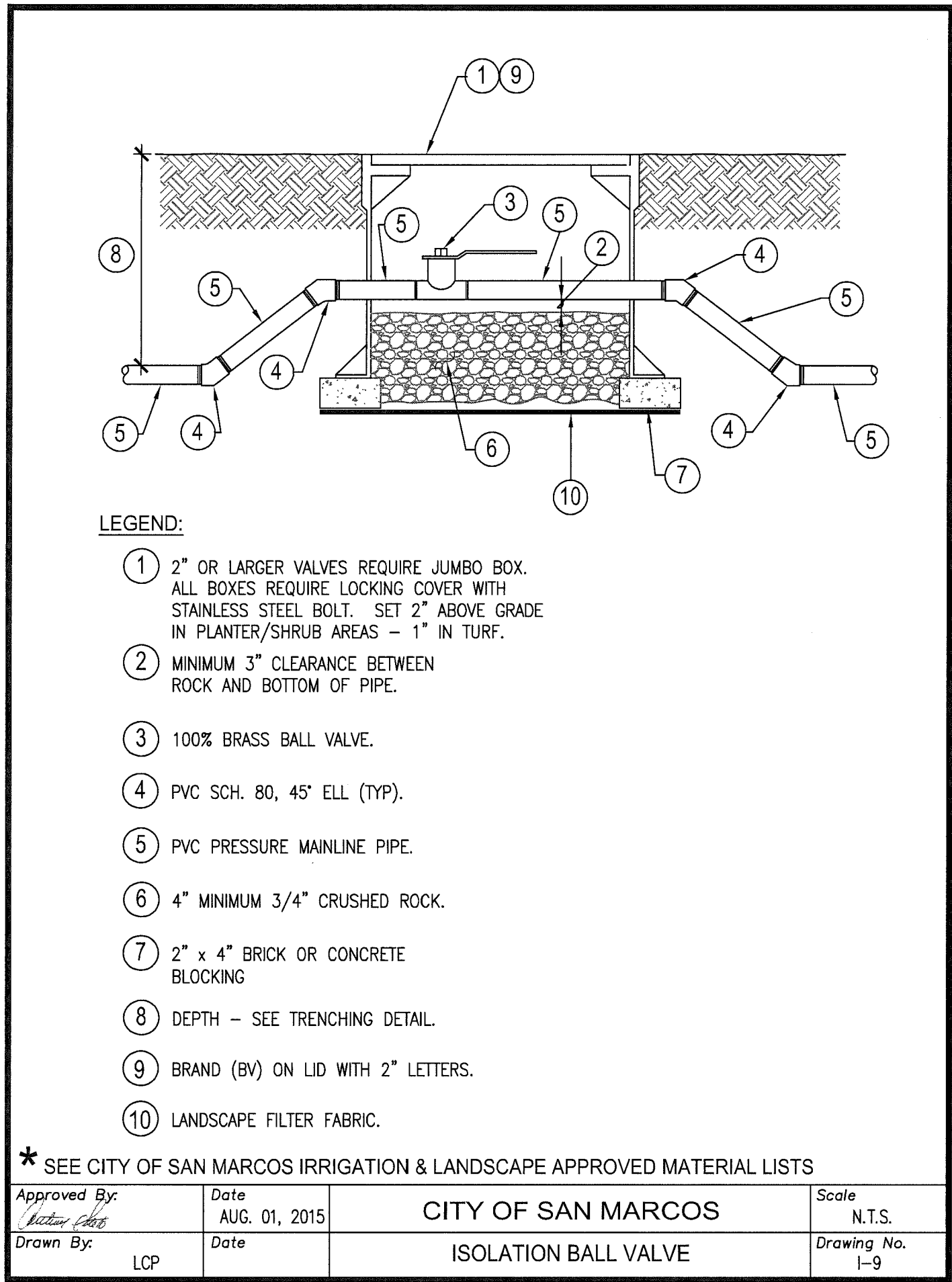
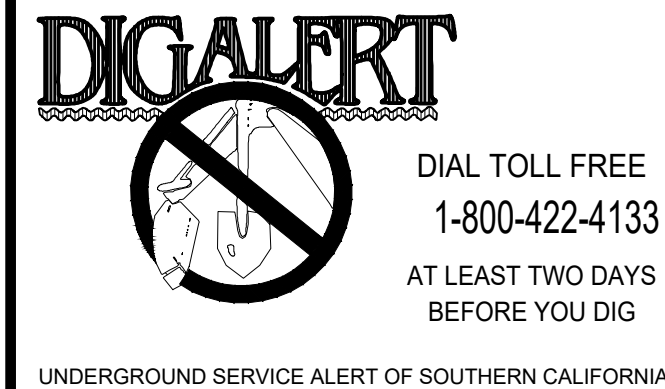
CITY APPROVED CHANGES					
Δ NO.	DESCRIPTION	AFFECTED SHEETS	AOW APP'D	APP'D BY	DATE

LANDSCAPE ARCHITECT OF WORK	
By: _____	
License No.: _____ exp.: _____	
Date: _____	
RECOMMENDED FOR APPROVAL	
By: Andrew Proud, Landscape Inspection Supervisor	
Date: _____	
APPROVED FOR CONSTRUCTION	
By: Isaac Etchamendy, City Engineer	
R.C.E.: _____ exp.: _____	
Date: _____	

BENCH MARK	
Description: _____	
Location: _____	
Record From: _____	
Elev.: _____	Datum: _____

LANDSCAPE ARCHITECT OF WORK AS-BUILT CERTIFICATE			
AS THE LANDSCAPE ARCHITECT OF WORK, I HEREBY CERTIFY THAT, TO THE BEST OF MY KNOWLEDGE AND BELIEF, THE IMPROVEMENTS SHOWN ON THIS SET OF CONSTRUCTION PLANS, SHEET XXXX THROUGH SHEET XXXX, HAVE BEEN INSTALLED AND CONSTRUCTED IN SUBSTANTIAL CONFORMANCE WITH THESE AS-BUILT PLANS, INCLUDING ALL APPROPRIATE STANDARDS AND ANY DISCRETIONARY APPROVAL(S) FOR THE PROJECT.			
DATE: 12/08/2025		DATE: 12/08/2025	
BRETT ALLEN, LLA License No. 6595, EXP. 12/31/2025		ISAAC ETCHAMENDY 81294 9/30/2026	
CITY OF SAN MARCOS		City Drawing No.	
LANDSCAPE PLANS FOR: SAN ELJO HILLS PARK - DOG PARK CONSTRUCTION DETAILS		YXXX-XXXX PROJECT NO. SDPXXX-XXXX MF XXXX	
Sheet 5 of 16		Pxx-xxxx	

FOR APPROVAL






- LEGEND:**
- ① 2" or LARGER VALVES REQUIRE JUMBO ALL BOXES REQUIRE LOCKING COVER STAINLESS STEEL BOLT. SET 2" ABOVE IN PLANTER/SHRUB AREAS - 1" IN T
 - ② MINIMUM 3" CLEARANCE BETWEEN ROCK AND BOTTOM OF PIPE.
 - ③ 100% BRASS BALL VALVE.
 - ④ PVC SCH. 80, 45" ELL (TYP).
 - ⑤ PVC PRESSURE MAINLINE PIPE.
 - ⑥ 4" MINIMUM 3/4" CRUSHED ROCK.
 - ⑦ 2" x 4" BRICK OR CONCRETE BLOCKING
 - ⑧ DEPTH - SEE TRENCHING DETAIL.
 - ⑨ BRAND (BV) ON LID WITH 2" LETTERS.
 - ⑩ LANDSCAPE FILTER FABRIC.

* SEE CITY OF SAN MARCOS IRRIGATION & LANDSCAPE APPROVED MATERIAL LISTS

Approved By: <i>Nathan Ellis</i>	Date AUG. 01, 2015	CITY OF SAN MARCOS	Scale N.T.S.
Drawn By: LCP	Date	ISOLATION BALL VALVE	Drawing No. I-9

LANDSCAPE ARCHITECT OF WORK
By: _____
License No.: _____ exp.: _____
Date: _____
RECOMMENDED FOR APPROVAL
By: _____
Andrew Proud, Landscape Inspection Supervisor
Date: _____
APPROVED FOR CONSTRUCTION
By: _____
Isaac Etchamendy, City Engineer
R.C.E.: _____ exp.: _____
Date: _____

BENCH MARK	
Description: _____	
Location: _____	
Record From: _____	
Elev.: _____	Datum: _____

	 <p>LANDSCAPE ARCHITECTS 462 STEVENS AVENUE, SUITE 107 SOLANA BEACH, CA 92075-2042 619-294-8484; FAX 619-674-0626</p>	<p>INSPECTED AND RECOMMENDED FOR ACCEPTANCE</p> <p>_____ Public Works Inspector Date</p> <p>APPROVED AS RECORD PLAN</p> <p>ISAAC ETCHAMENDY 81294 9/30/2026 DATE: _____</p>	
<p><u>LANDSCAPE ARCHITECT OF WORK AS-BUILT CERTIFICATE</u></p> <p>AS THE LANDSCAPE ARCHITECT OF WORK, I HEREBY CERTIFY THAT, TO THE BEST OF MY KNOWLEDGE AND BELIEF, THE IMPROVEMENTS SHOWN ON THIS SET OF CONSTRUCTION PLANS, SHEET XXXX THROUGH SHEET XXXX, HAVE BEEN INSTALLED AND CONSTRUCTED IN SUBSTANTIAL CONFORMANCE WITH THESE AS-BUILT PLANS, INCLUDING ALL APPROPRIATE STANDARDS AND ANY DISCRETIONARY APPROVAL(S) FOR THE PROJECT.</p> <p> DATE: <u>12/08/2025</u> BRETT ALLEN, LLA License No. 6595, EXP. 12/31/2025</p>		<p>CITY OF SAN MARCOS</p> <p>LANDSCAPE PLANS FOR: SAN ELJO HILLS PARK - DOG PARK</p> <p>YYXX-XXXX SPDXX-XXXX MF XXXX</p>	
<p>CONSTRUCTION DETAILS</p>		<p>City Drawing No. _____</p> <p>Pxx-xxxxx</p> <p>Sheet <u>7</u> of 16</p>	

SECTION 032000 CONCRETE REINFORCEMENT		D. PROVIDE SUFFICIENT NUMBERS OF SUPPORTS, AND OF STRENGTH TO CARRY THE REINFORCEMENT DURING POUR AND SET OPERATIONS.		F. CONCRETE TESTING SERVICE: ENGAGE A QUALIFIED INDEPENDENT TESTING AGENCY TO PERFORM MATERIAL EVALUATION TESTS AND TO DESIGN CONCRETE MIXES.		C. WATER-REDUCING ADMIXTURE: ASTM C 494, TYPE A.	
PART 1 - GENERAL		3.04 SPLICES:		1.06 MOCK-UPS		D. WATER-REDUCING AND RETARDING ADMIXTURE: ASTM C 494, TYPE D.	
1.01 SUMMARY		LAP SPLICES AS INDICATED ON THE DRAWINGS AND TIE SECURELY WITH THE SPECIFIED WIRE TO PREVENT DISPLACEMENT OF SPLICES DURING POUR AND SET OPERATIONS.		A. PRIOR TO CONSTRUCTION, PROVIDE (1) 4' X 4' X 4" THICK SAMPLE OF EACH PAVING TYPE, COLOR, FINISH AND SEALERS AS SPECIFIED ON DRAWINGS.		E. WATER-REDUCING AND ACCELERATING ADMIXTURE: ASTM C 494, TYPE E.	
THIS WORK INCLUDES ALL SERVICES, LABOR, MATERIALS, TRANSPORTATION AND EQUIPMENT NECESSARY TO PERFORM THE WORK INDICATED ON THE DRAWINGS AND AS SPECIFIED. THE CONDITIONS OF THE CONTRACT AND DIVISION 1 APPLY TO THIS SECTION AS FULLY AS IF REPEATED HEREIN.		END OF SECTION 032000		B. ENSURE THAT EACH MOCK-UP CONTAINS JOINT TYPES SPECIFIED ON PROJECT, E.G. CONSTRUCTION, SAWCUT WEAKENED PLANE, SAWCUT JOINT, ETC.		F. HIGH-RANGE, WATER-REDUCING ADMIXTURE: ASTM C 494, TYPE F.	
1.02 RELATED REQUIREMENTS:		SECTION 320523 PORTLAND CEMENT CONCRETE PAVING		C. LOCATE MOCK-UPS IN A CONVENIENTLY ACCESSIBLE AND PROTECTED PLACE. APPROVED MOCK-UPS WILL BE STANDARD FOR FUTURE INSTALLATION REVIEW.		2.05 CURING MATERIALS	
A. SECTION 320523 PORTLAND CEMENT CONCRETE PAVING		PART 1 - GENERAL		D. MOCK-UPS SHALL BE APPROVED BY LANDSCAPE ARCHITECT. ADDITIONAL SAMPLES SHALL BE PREPARED TO ENSURE DESIGN COMPLIANCE PER LANDSCAPE ARCHITECT'S REQUEST.		A. ABSORPTIVE COVER: AASHTO M 182, CLASS 2, BURLAP CLOTH MADE FROM JUTE OR KENAF, WEIGHING APPROXIMATELY 9 OZ./SQ. YD. (305 G/SQ.M) DRY.	
1.03 GENERAL REQUIREMENTS:		1.01 RELATED DOCUMENTS		E. REMOVE MOCK-UPS FROM SITE UPON COMPLETION OF WORK.		B. MOISTURE-RETAINING COVER: ASTM C 171, POLYETHYLENE FILM OR WHITE BURLAP-POLYETHYLENE SHEET.	
A. PROVIDE CONCRETE REINFORCEMENT WHERE SHOWN ON THE DRAWINGS, AS SPECIFIED HEREIN AND AS NEEDED FOR A COMPLETE AND PROPER INSTALLATION.		A. DRAWINGS AND GENERAL PROVISIONS OF THE CONTRACT, INCLUDING GENERAL AND SUPPLEMENTARY CONDITIONS AND DIVISION 1 SPECIFICATION SECTIONS, APPLY TO THIS SECTION.		1.07 PROJECT CONDITIONS		C. WATER: POTABLE.	
B. USE ADEQUATE NUMBERS OF SKILLED WORKMEN WHO ARE THOROUGHLY TRAINED AND EXPERIENCED IN THE NECESSARY CRAFTS AND WHO ARE COMPLETELY FAMILIAR WITH THE SPECIFIED REQUIREMENTS AND THE METHODS NEEDED FOR PROPER PERFORMANCE OF THE WORK OF THIS SECTION.		B. SECTION 032000 CONCRETE REINFORCEMENT		A. TRAFFIC CONTROL: MAINTAIN ACCESS FOR VEHICULAR AND PEDESTRIAN TRAFFIC AS REQUIRED FOR OTHER CONSTRUCTION ACTIVITIES.		D. CLEAR SOLVENT-BORNE OR WATER-BORNE LIQUID-MEMBRANE-FORMING CURING COMPOUND: ASTM C 309, TYPE 1, CLASS B.	
C. PERFORM CONCRETE REINFORCEMENT WORKS IN ACCORDANCE WITH ACI 301, UNLESS OTHERWISE SPECIFIED IN THIS SECTION.		1.02 SUMMARY		PART 2 - PRODUCTS		E. EVAPORATION CONTROL: MONOMOLECULAR FILM-FORMING COMPOUND APPLIED TO EXPOSED CONCRETE SLAB SURFACES FOR TEMPORARY PROTECTION FROM RAPID MOISTURE LOSS.	
1.04 DELIVERY STORAGE AND HANDLING:		A. THIS SECTION INCLUDES EXTERIOR CEMENT CONCRETE PAVEMENT FOR THE FOLLOWING:		2.01 FORMS		2.06 RELATED MATERIALS	
A. DELIVER THE MATERIALS TO THE JOB SITE IN GOOD CONDITION AND PROPERLY PROTECTED AGAINST DAMAGE AND CORROSION.		1. CONCRETE PAVING.		A. FORM MATERIALS: PLYWOOD, MDO PLYWOOD, METAL, METAL-FRAMED PLYWOOD, OR OTHER APPROVED PANEL-TYPE MATERIALS TO PROVIDE FULL-DEPTH, CONTINUOUS, STRAIGHT, SMOOTH EXPOSED SURFACES.		D. EXPANSION AND ISOLATION JOINT FILLER STRIPS: ASTM D 1751, ASPHALT-SATURATED CELLULOSIC FIBER, OR ASTM D 1752, CORK OR SELF-EXPANDING CORK.	
B. STORE MATERIAL IN A LOCATION AND IN A MANNER TO AVOID DAMAGE. STACKING SHALL BE DONE IN A WAY WHICH WILL PREVENT CORROSION AND BENDING.		1.03 DEFINITIONS		1. USE FLEXIBLE OR CURVED FORMS FOR CURVES OF A RADIUS 100 FEET (30.5M) OR LESS.		E. BONDING AGENT: ASTM C 1059, TYPE II, NON-REDISPERSIBLE, ACRYLIC EMULSION OR STYRENE BUTADIENE.	
C. STORE MATERIAL IN A CLEAN, DRY LOCATION AWAY FROM UNCURED CONCRETE AND MASONRY. COVER WITH WATERPROOF PAPER, TARPULIN OR POLYPROPYLENE SHEETING IN A MANNER THAT WILL PERMIT CIRCULATION OF AIR INSIDE THE COVERING.		A. CEMENTITIOUS MATERIALS: PORTLAND CEMENT ALONE OR IN COMBINATION WITH ONE OR MORE OF BLENDED HYDRAULIC CEMENT, EXPANSIVE HYDRAULIC CEMENT, FLY ASH AND OTHER POZZOLANS, GROUND GRANULATED BLAST-FURNACE SLAG, AND SILICA FUME.		B. FORM-RELEASE AGENT: COMMERCIALY FORMULATED FORM RELEASE AGENT THAT WILL NOT BOND WITH, STAIN, OR ADVERSELY AFFECT CONCRETE SURFACES AND WILL NOT IMPAIR SUBSEQUENT TREATMENTS OF CONCRETE SURFACES.		F. EPOXY BONDING ADHESIVE: ASTM C 881, TWO-COMPONENT EPOXY RESIN, CAPABLE OF HUMID CURING AND BONDING TO DAMP SURFACES, OF CLASS AND GRADE TO SUIT REQUIREMENTS.	
PART 2 - PRODUCTS		A. GENERAL: SUBMIT THE FOLLOWING ACCORDING TO THE CONDITIONS OF THE CONTRACT AND DIVISION 1 SPECIFICATION SECTIONS.		2.02 STEEL REINFORCEMENT		2.07 CONCRETE MIXES	
2.01 REINFORCEMENT MATERIALS AND ACCESSORIES:		B. PRODUCT DATA: FOR EACH TYPE OF MANUFACTURED MATERIAL AND PRODUCT INDICATED.		A. REINFORCEMENT BARS: ASTM A 615/A 615M, GRADE 60 (GRADE 420), DEFORMED.		A. PREPARE DESIGN MIXES, PROPORTIONED ACCORDING TO ACI 211.1 AND ACI 301, FOR EACH TYPE AND STRENGTH OF NORMAL-WEIGHT CONCRETE DETERMINED BY EITHER LABORATORY TRIAL MIXES OR FIELD EXPERIENCE.	
A. BARS: DEFORMED BILLET STEEL BARS, ASTM A615; GRADE 60.		C. DESIGN MIXES: FOR EACH CONCRETE PAVEMENT MIX. INCLUDE ALTERNATE MIX DESIGNS WHEN CHARACTERISTICS OF MATERIALS, PROJECT CONDITIONS, WEATHER, TEST RESULTS, OR OTHER CIRCUMSTANCES WARRANT ADJUSTMENTS.		B. JOINT DOWEL BARS: PLAIN STEEL BARS, ASTM A 615/A 615M, GRADE 60 (GRADE 420). CUT BARS TRUE TO LENGTH WITH ENDS SQUARE AND FREE OF BURRS.		B. USE A QUALIFIED INDEPENDENT TESTING AGENCY FOR PREPARING AND REPORTING PROPOSED MIX DESIGNS FOR THE TRIAL BATCH METHOD.	
B. STEEL WIRE: FOR TIE WIRE USE BLACK ANNEALED STEEL, 16-GAUGE MINIMUM.		D. MATERIAL TEST REPORTS: FROM A QUALIFIED TESTING AGENCY INDICATING AND INTERPRETING TEST RESULTS FOR COMPLIANCE WITH REQUIREMENTS INDICATED IN THIS SPECIFICATION BASED ON COMPREHENSIVE TESTING OF CURRENT MATERIALS.		C. BAR SUPPORTS: BOLSTERS, CHAIRS, SPACERS, AND OTHER DEVICES FOR SPACING, SUPPORTING AND FASTENING REINFORCEMENT BARS, WELDED WIRE FABRIC, AND DOWELS IN PLACE. MANUFACTURE BAR SUPPORTS ACCORDING TO CRSI'S :MANUAL OF STANDARD PRACTICE: FROM STEEL WIRE, PLASTIC, OR PRECAST CONCRETE OR FIBER-REINFORCED CONCRETE OF GREATER COMPRESSIVE STRENGTH THAN CONCRETE, AND AS FOLLOWS:		1. DO NOT USE OWNER'S FIELD QUALITY-CONTROL TESTING AGENCY AS THE INDEPENDENT TESTING AGENCY.	
2.02 OTHER MATERIALS:		E. MATERIAL CERTIFICATES IN LIEU OF MATERIAL LABORATORY TEST REPORTS WHEN PERMITTED BY LANDSCAPE ARCHITECT. MATERIAL CERTIFICATES SHALL BE SIGNED BY MANUFACTURER AND CONTRACTOR CERTIFYING THAT EACH MATERIAL ITEM COMPLIES WITH OR EXCEEDS REQUIREMENTS. PROVIDE CERTIFICATION FROM ADMIXTURE MANUFACTURERS THAT CHLORIDE CONTENT COMPLIES WITH REQUIREMENTS.		1. EQUIP WIRE BAR SUPPORTS WITH SAND PLATES OR HORIZONTAL RUNNERS WHERE BASE MATERIAL WILL NOT SUPPORT CHAIR LEGS.		2. SLUMP LIMIT: 3 INCHES (75 MM)	
PROVIDE OTHER MATERIALS NOT SPECIFICALLY DESCRIBED BUT REQUIRED FOR A COMPLETE AND PROPER INSTALLATION AS SELECTED BY THE CONTRACTOR SUBJECT TO THE APPROVAL OF THE OWNER.		F. PENETRATING CONCRETE SEALERS FOR CAST-IN-PLACE CONCRETE PAVING.		2.03 CONCRETE MATERIALS		D. CEMENTITIOUS MATERIALS: LIMIT PERCENTAGE, BY WEIGHT, OF CEMENTITIOUS MATERIALS OTHER THAN PORTLAND CEMENT IN CONCRETE AS FOLLOWS:	
PART 3 - EXECUTION		1.05 QUALITY ASSURANCE		A. GENERAL: USE THE SAME BRAND AND TYPE OF CEMENTITIOUS MATERIAL FROM THE SAME MANUFACTURER THROUGHOUT THE PROJECT.		1. FLY ASH: 25 PERCENT MAXIMUM	
3.01 SURFACE CONDITIONS:		A. INSTALLER QUALIFICATION: AN EXPERIENCED INSTALLER WHO HAS COMPLETED PAVEMENT WORK SIMILAR IN MATERIAL, DESIGN, AND EXTENT TO THAT INDICATED FOR THIS PROJECT AND WHOSE WORK HAS RESULTED IN CONSTRUCTION WITH A RECORD OF SUCCESSFUL IN-SERVICE PERFORMANCE.		B. PORTLAND CEMENT: ASTM C 150, TYPE I.		E. ADD AIR-ENTRAINING ADMIXTURE OF MANUFACTURER'S PRESCRIBED RATE TO RESULT IN CONCRETE AT A POINT OF PLACEMENT HAVING AN AIR CONTENT OF 2.5 TO 4.5 PERCENT.	
EXAMINE THE AREAS AND CONDITIONS UNDER WHICH WORK OF THIS SECTION WILL BE PERFORMED. CORRECT CONDITIONS DETRIMENTAL TO TIMELY AND PROPER COMPLETION OF THE WORK. DO NOT PROCEED UNTIL UNSATISFACTORY CONDITIONS ARE CORRECTED.		B. MANUFACTURER QUALIFICATIONS: MANUFACTURER OF READY-MIXED CONCRETE PRODUCTS COMPLYING WITH ASTM C 94 REQUIREMENTS FOR PRODUCTION FACILITIES AND EQUIPMENT.		C. FLY ASH: ASTM C 618, CLASS F.		2.08 CONCRETE MIXING	
3.02 FABRICATION OF REBAR:		C. TESTING AGENCY QUALIFICATIONS: AN INDEPENDENT TESTING AGENCY, ACCEPTABLE TO AUTHORITIES HAVING JURISDICTION, QUALIFIED ACCORDING TO ASTM C 1077 AND ASTM E 329 TO CONDUCT THE TESTING INDICATED, AS DOCUMENTED ACCORDING TO ASTM E 548.		D. NORMAL WEIGHT AGGREGATE: ASTM C 33, CLASS 4, UNIFORMLY GRADED, FROM A SINGLE SOURCE, WITH COARSE AGGREGATE AS FOLLOWS:		A. READY-MIXED CONCRETE: COMPLY WITH REQUIREMENTS AND WITH ASTM C 94.	
A. FABRICATE REINFORCING BARS TO CONFORM TO THE REQUIRED SHAPES AND DIMENSIONS.		D. SOURCE LIMITATIONS: OBTAIN EACH TYPE OR CLASS OF CEMENTITIOUS MATERIAL OF THE SAME BRAND FROM THE SAME MANUFACTURER'S PLANT AND EACH AGGREGATE FROM ONE SOURCE.		1. MAXIMUM AGGREGATE SIZE: 1-1/2 INCHES (38 MM) NOMINAL.		1. WHEN AIR TEMPERATURE IS BETWEEN 85 DEG. F. (30 DEG C) AND 90 DEG F (32 DEG C), REDUCE MIXING AND DELIVERY TIME FROM 1-1/2 HOURS TO 75 MINUTES; WHEN AIR TEMPERATURE IS ABOVE 90 DEG F (32 DEG C), REDUCE MIXING AND DELIVERY TIME TO 60 MINUTES.	
B. PLACE REINFORCEMENT SUPPORTED AND SECURED AGAINST DISPLACEMENT.		E. ACI PUBLICATIONS: COMPLY WITH ACI 301, "SPECIFICATION FOR STRUCTURAL CONCRETE, " UNLESS MODIFIED BY THE REQUIREMENTS OF THE CONTRACT DOCUMENTS.		2. DO NOT USE FINE OR COARSE AGGREGATES CONTAINING SUBSTANCES THAT CAUSE SPALLING.		2.09 CONCRETE PAVING SEALERS	
C. ENSURE REINFORCING IS CLEAN, FREE OF LO							

- C. TEST RESULTS SHALL BE REPORTED IN WRITING TO LANDSCAPE ARCHITECT, CONCRETE MANUFACTURER, AND CONTRACTOR WITHIN 24 HOURS OF TESTING. REPORTS OF COMPRESSIVE-STRENGTH TESTS SHALL CONTAIN PROJECT IDENTIFICATION NAME AND NUMBER, DATE OF CONCRETE PLACEMENT, NAME OF CONCRETE TESTING AGENCY, CONCRETE TYPE AND CLASS, LOCATION OF CONCRETE BATCH IN PAVEMENT, DESIGN COMPRESSIVE STRENGTH AT 28 DAYS, CONCRETE MIX PROPORTIONS AND MATERIALS, COMPRESSIVE BACKING STRENGTH, AND TYPE OF BREAK FOR BOTH 7- AND 28-DAY TESTS.

D. NONDESTRUCTIVE TESTING: IMPACT HAMMER, SONOSCOPE, OR OTHER NONDESTRUCTIVE DEVICE MAY BE PERMITTED BY LANDSCAPE ARCHITECT BUT WILL NOT BE USED AS THE SOLE BASIS FOR APPROVAL OR REJECTION.

E. ADDITIONAL TESTS: TESTING AGENCY SHALL MAKE ADDITIONAL TESTS OF THE CONCRETE WHEN TEST RESULTS INDICATE SLUMP, AIR ENTRAINMENT, CONCRETE STRENGTHS, OR OTHER REQUIREMENTS HAVE NOT BEEN MET, AS DIRECTED BY LANDSCAPE ARCHITECT. TESTING AGENCY MAY CONDUCT TEST TO DETERMINE ADEQUACY OF CONCRETE BY CORED CYLINDERS COMPLYING WITH ASTM C 42, OR BY OTHER METHODS AS DIRECTED.

3.11 REPAIRS AND PROTECTION

- A. REMOVE AND REPLACE CONCRETE PAVING THAT IS BROKEN, DAMAGED, OR DEFECTIVE, OR DOES NOT MEET THE REQUIREMENTS OF THIS SECTION.

B. PROTECT CONCRETE FROM DAMAGE. EXCLUDE TRAFFIC FROM PAVING FOR AT LEAST 14 DAYS AFTER PLACEMENT. WHEN CONSTRUCTION TRAFFIC IS PERMITTED, MAINTAIN PAVING AS CLEAN AS POSSIBLE BY REMOVING SURFACE STAINS AND SPILLAGE OF MATERIALS AS THEY OCCUR.

C. MAINTAIN CONCRETE PAVING FREE OF STAINS, DISCOLORATION, DIRT, AND OTHER FOREIGN MATERIAL. SWEEP CONCRETE PAVING NOT MORE THAN 2 DAYS PRIOR TO DATE SCHEDULED FOR SUBSTANTIAL COMPLETION INSPECTIONS.

END OF SECTION 320523

SECTION 321540
DECOMPOSED GRANITE SURFACING

PART 1 - GENERAL

1.01 SUMMARY

- A. SECTION INCLUDES:

1. NATURALLY OCCURRING DECOMPOSED GRANITE AND CRUSHED STONE SURFACING AS SHOWN ON DRAWINGS AND SPECIFIED HEREIN. INCLUDE SUB-GRADE, EDGING AND RELATED ACCESSORIES.

1.02 REFERENCES AND STANDARDS:

- A. ASTM C136 – STANDARD TEST METHOD FOR SIEVE ANALYSIS OF FINE AND COARSE AGGREGATES.

B. ASTM D448 – STANDARD CLASSIFICATION FOR SIZES OF AGGREGATE FOR ROAD AND BRIDGE CONSTRUCTION. ASTM: AMERICAN STANDARD FOR TESTING MATERIALS

1.03 SUBMITTALS

- A. COMPLY WITH SECTION 01 33 00 SUBMITTAL PROCEDURES.

B. SHOP DRAWINGS: SUBMIT PLAN LAYOUT OF ALL DECOMPOSED GRANITE SURFACING AREAS AND DETAIL DRAWINGS SHOWING THE VARIOUS COMPONENTS OF THE SURFACING SYSTEM, INCLUDING SUB-BASE AND EDGING.

C. PRODUCT DATA: MANUFACTURER'S LITERATURE COMPLETELY DESCRIBING ALL COMPONENTS OF THE DECOMPOSED GRANITE SURFACING SYSTEM, INCLUDING:



DIAL TOLL FREE
1-800-422-4133
AT LEAST TWO DAYS
BEFORE YOU DIG

UNDERGROUND SERVICE ALERT OF SOUTHERN CALIFORNIA

VALLECITOS WATER DISTRICT		SAN MARCOS FIRE PROTECTION DISTRICT	
APPROVAL OF THESE IMPROVEMENT PLANS DOES NOT COMMIT DISTRICT TO SUPPLYING WASTEWATER SERVICES TO THIS PROJECT OR GUARANTEE THAT WATER WILL BE AVAILABLE		By: JASON NAILON, FIRE MARSHAL Date: _____	
By: JASON P. HUBBARD, P.E. District Engineer R.C.E. NO. 60317 exp.: 6/30/2024 APPROVAL VALID FOR EIGHTEEN (18) MONTHS FROM DATE SIGNED		REQUIRED FIRE HYDRANT FLOW _____ *(GPM) APPROVED FIRE HYDRANT FLOW _____ *(GPM) <input type="checkbox"/> APPROVED FIRE FLOW INCLUDES MITIGATION MEASURES *GALLON PER MINUTE VALLECITOS WATER DISTRICT IS NOT RESPONSIBLE FOR MAINTENANCE, REPAIR, OR REPLACEMENT OF FIRE HYDRANTS UNLESS SPECIFIED UNDER SEPARATE AGREEMENT WITH THE JURISDICTIONAL FIRE AGENCY	
VALLECITOS WATER DISTRICT		VWD AS-BUILT	
PRESSURE ZONE: _____ HGL _____		By: NAME (ENGINEER OF WORK) Date: _____	
PUMP ZONE: _____		R.C.E. NO. _____ exp.: 6/30/20XX	

1. PREPARATION INSTRUCTIONS AND RECOMMENDATIONS.

2. INSTALLATION METHODS AND APPLICATION PROCEDURES.

D. SAMPLES FOR VERIFICATION:

1. SUBMIT SAMPLES OF EACH OF THE FOLLOWING:

a. THREE POUND SAMPLE OF EACH TYPE AND COLOR OF DECOMPOSED GRANITE SURFACING MATERIAL.

E. CERTIFICATION:

1. MANUFACTURER AND INSTALLER QUALIFICATIONS.

1.04 QUALITY ASSURANCE

- A. COMPLY WITH SECTION 01 40 00 QUALITY REQUIREMENTS.

B. MANUFACTURER: COMPANY SPECIALIZING IN MANUFACTURING WORK OF THIS SECTION WITH MINIMUM 5 YEARS DOCUMENTED EXPERIENCE.

C. SINGLE SOURCE RESPONSIBILITY: OBTAIN EACH TYPE OF DECOMPOSED GRANITE SURFACING FROM SINGLE MANUFACTURER.

D. MOCK UP: PROVIDE A MOCK-UP FOR EVALUATION OF SURFACE PREPARATION, INSTALLATION TECHNIQUES AND QUALITY OF APPLICATION.

1. INSTALL A 4-FEET X 4-FEET MINIMUM OF DECOMPOSED GRANITE SURFACING, INCLUDING SUBBASE COURSE AND EDGING, AT LOCATION APPROVED BY LANDSCAPE ARCHITECT.

2. DO NOT PROCEED WITH REMAINING WORK UNTIL INSTALLATION OF DECOMPOSED GRANITE SURFACING IS APPROVED BY LANDSCAPE ARCHITECT.

3. APPROVED MOCK-UP MAY REMAIN AS PART OF COMPLETED WORK.

1.05 DELIVERY, STORAGE, AND HANDLING

- A. COMPLY WITH SECTION 01 60 00 PRODUCT REQUIREMENTS

B. BAGGED MATERIALS: ACCEPT DELIVERY OF MATERIALS ONLY IN UNOPENED AND UNDAMAGED CONTAINERS BEARING THE BRAND NAME AND MANUFACTURER'S IDENTIFICATION.

C. BULK MATERIALS: EACH LOAD OF DECOMPOSED GRANITE SURFACING MATERIAL ARRIVING AT THE JOB SITE IN BULK SHALL BE ACCOMPANIED BY A DELIVERY TICKET CONTAINING THE FOLLOWING MINIMUM INFORMATION:

D. PROTECT DECOMPOSED GRANITE SURFACE SURFACING MATERIALS FROM CONTAMINATION UNTIL READY FOR INSTALLATION.

E. STORE UNDER COVER.

1.06 PROJECT CONDITIONS

- A. SURFACES TO RECEIVE DECOMPOSED GRANITE SURFACING SHALL BE FROST FREE AND FREE OF OIL OR ANY OTHER FOREIGN MATTER, WHICH MAY IMPAIR THE PROPER INSTALLATION OF THE SURFACING SYSTEM.

B. DO NOT INSTALL DECOMPOSED GRANITE SURFACING WHEN SUBBASE COURSE IS MUDDY OR SATURATED WITH STANDING WATER.

C. PERFORM WORK IN DRY WEATHER WHEN SUBGRADE IS SUFFICIENTLY STABLE TO BE PROPERLY COMPACTED.

PART 2 – PRODUCTS

2.01 STABILIZED DECOMPOSED GRANITE

- A. DECOMPOSED GRANITE SHALL BE BLENDED MATERIAL CONSISTING OF NATURAL COLORS RANGING FROM TAN TO GOLD. MATERIAL SIZE SHALL NOT EXCEED 3/8".

B. DECOMPOSED GRANITE SHALL BE COMPACTED TO A MINIMUM THICKNESS OF 4 INCHES AND SHALL BE COMPACTED TO 85%.

C. DECOMPOSED GRANITE PATHWAYS AND TRAILS SHALL BE SUBJECT TO ADA GUIDELINES UNLESS OTHERWISE SPECIFIED AND APPROVED IN WRITING BY THE DISTRICT.

D. DECOMPOSED GRANITE SHALL BE INSTALLED FLUSH WITH ALL WALKWAYS AND CURBS.

E. ALL DECOMPOSED GRANITE PATHWAYS AND TRAILS SHALL HAVE A CROSS FALL OF 2% MAX. ALL DECOMPOSED GRANITE PATHWAYS SHALL BE CROWNED IN THE CENTER.

F. ALL DECOMPOSED GRANITE MUST SHEET FLOW AT 1-1/2% MINIMUM TO 2% MAXIMUM TO AVOID STANDING WATER.

G. CONTRACTOR SHALL SUBMIT SAMPLES FOR DISTRICT APPROVAL PRIOR TO DELIVERY.

H. DECOMPOSED GRANITE SHALL BE DERIVED FROM THE CRUSHING AND SCREENING OF NATURALLY FRIABLE GRANITE. THE BLENDING OF COURSE SAND WITH ROCK DUST IS NOT AN EQUAL PRODUCT.

I. DECOMPOSED GRANITE SHALL BE SCREENED TO INCLUDE STONE PARTICLES OF 3/8" MINUS. THE PARTICLES THAT PASS THE 200 SCREEN MESH AS DETERMINED BY ASTM METHODOLOGY SHALL NOT EXCEED 18 PERCENT.

J. DECOMPOSED GRANITE SHALL HAVE A NATRACIL™ ORGANIC BINDER WITH A MINIMUM SWELL VOLUME OF 35 ML/GM. THE BINDER SHALL BE INCORPORATED WITH THE GRANITE FINES BY THE USE OF A PUG MILL THAT INCLUDES A WEIGHT BELT FEEDER THAT INSURES THE PROPER RATIO OF BINDER TO GRANITE FINES. BLENDING WITH THE USE OF A BUCKET LOADER OR SIMILAR IS NOT ACCEPTABLE. FOR PATHWAYS THE BINDER SHALL BE BLENDED AT THE RATE OF 12 LBS. PER TON OF GRANITE FINES. FOR PARKING LOTS OR ROADWAYS THE BINDER SHALL BE INCORPORATED AT THE RATE OF 14 LBS. PER TON. PATHWAYS, DRIVEWAYS OR VEHICULAR ROADWAYS SHALL HAVE STABILIZED DECOMPOSED GRANITE AND BE PLACED TO A MINIMUM DEPTH OF 3" COMPACTED OVER AN APPROVED BASE. EACH 2" LIFT EVENLY SPREAD THE MATERIAL OVER AREA OF CONCERN. GRADE AND SMOOTH AS DESIRED. THOROUGHLY WATER ENTIRE AREA SO THAT THE ENTIRE DEPTH OF THE MATERIAL IS MOIST. AFTER A PERIOD OF +/- 6 HOURS COMPACT THE FINAL LIFT WITH A 1000-3000 LB. DRUM ROLLER. ALLOW FOR A SUFFICIENT CURING PERIOD OF +/- 4 DAYS PRIOR TO USE.

K. SUPPLIER: GAIL MATERIALS (951) 667-6106, WWW.GAILMATERIALS.NET OR APPROVED EQUAL.

PART 3 – EXECUTION

3.01 EXAMINATION

- A. EXAMINE AREAS AND CONDITIONS UNDER WHICH WORK OF THIS SECTION WILL BE PERFORMED. NOTIFY LANDSCAPE ARCHITECT OF UNSATISFACTORY PREPARATION BEFORE PROCEEDING.

B. CORRECT CONDITIONS DETRIMENTAL TO TIMELY AND PROPER COMPLETION OF WORK.

C. DO NOT PROCEED UNTIL UNSATISFACTORY CONDITIONS ARE CORRECTED.

D. LAY OUT WORK PRIOR TO THE COMMENCEMENT OF INSTALLATION.

3.02 PREPARATION

- A. EXCAVATION: EXCAVATE TO DEPTH REQUIRED SO EDGES OF DECOMPOSED GRANITE SURFACING WILL MATCH ADJACENT GRADES AND HAVE A MAXIMUM CROSS-SLOPE OF 2 PERCENT. ENSURE EDGES AND BOTTOM OF EXCAVATION ARE IN A SMOOTH AND EVEN LINE.

B. SUBGRADE PREPARATION: PLOW, HARROW AND MIX THE ENTIRE SURFACE OF THE IN-PLACE SUBGRADE TO A DEPTH OF AT LEAST 6-INCHES. AFTER THE MATERIAL HAS BEEN THOROUGHLY MIXED, THE SUBGRADE SHALL BE BROUGHT TO LINE AND GRADE AND COMPACTED TO 95% OF THE MAXIMUM LABORATORY DRY DENSITY AS DETERMINED BY THE STANDARD PROCTOR TEST.

C. HERBICIDE: APPLY HERBICIDE PER MANUFACTURER'S WRITTEN INSTRUCTIONS. LIMIT THE APPLICATION TO THE AREA TO RECEIVE DECOMPOSED GRANITE SURFACING.

3.03 INSTALLATION

- A. EDGING: INSTALL EDGING AS SHOWN ON PLANS AND DETAILS.

LANDSCAPE ARCHITECT OF WORK	
By: _____	
License No.: _____ exp.: _____	
Date: _____	
RECOMMENDED FOR APPROVAL	
By: Andrew Proud, Landscape Inspection Supervisor	
Date: _____	
APPROVED FOR CONSTRUCTION	BENCH MARK
By: Isaac Etchamendy, City Engineer	Description: _____
R.C.E.: _____ exp.: _____	Location: _____
Date: _____	Record From: _____ Datum: _____

- B. SUBGRADE: PROOF-ROLL THE SUBGRADE WITH HEAVY PNEUMATIC-TIRED EQUIPMENT TO LOCATE UNSTABLE AREAS AND TO IDENTIFY SOFT POCKETS AND AREAS OF EXCESS YIELDING. DO NOT PROOF-ROLL WET OR SATURATED SUBGRADES.

1. EXCAVATE SOFT SPOTS, UNSATISFACTORY SOILS, AND AREAS OF EXCESSIVE PUMPING OR RUTTING, AS DETERMINED BY LANDSCAPE ARCHITECT, AND REPLACE WITH COMPACTED BACKFILL OR FILL AS DIRECTED.

2. THE SURFACE OF THE COMPLETED SUBGRADE SHALL BE BLADED TO A SMOOTH AND UNIFORM TEXTURE.

3. THE FINISHED SUBGRADE SHALL BE UNIFORM AND FREE FROM DELETERIOUS DEBRIS SUCH AS ORGANIC MATERIALS, NAILS, STONES AND LOOSE SOIL.

- C. COMPACTION: COMPACT EACH LIFT OF THE SUBGRADE, AND FINAL FINISH DECOMPOSED GRANITE SURFACING MATERIALS WITH A ONE TO THREE-TON ROLLER OR COMPACTOR. IN SMALL AREAS THAT ARE DIFFICULT TO ACCESS WITH COMPACTION EQUIPMENT, HAND TAMPING MAY BE PERFORMED WITH MULTIPLE PASSES TO ACHIEVE THE REQUIRED DENSITY.

1. LIGHTLY SPRAY SURFACE AREA FOLLOWING COMPACTION. DO NOT DISTURB AGGREGATE SURFACE WITH SPRAY ACTION.

3.04 INSTALLATION OF DECOMPOSED GRANITE SURFACING

- A. SPREAD DECOMPOSED GRANITE SURFACING MATERIAL IN 2-INCH LIFTS. SPREAD THE PATHWAY MIX EVENLY AND SMOOTHLY BEFORE COMPACTING. ALLOW FOR 20-25% COMPACTION. SCREED IF POSSIBLE.

B. WET THE MIX TO ENSURE WATER HAS PENETRATED THE FULL DEPTH OF THE DECOMPOSED GRANITE SURFACING MATERIAL, AND ROLL EACH LIFT TO FORM A UNIFORM, SMOOTH SURFACE WITH A CROSS SLOPE OF 2% MAXIMUM. COMPACT EACH LIFT TO A MINIMUM 95% DENSITY.

C. GRADE AND SMOOTH TO THE REQUIRED ELEVATION; COMPACT FINAL LIFT WITH 1-3 TON DRUM ROLLER OR COMPACTOR.

D. MINIMUM COMPACTED THICKNESS: 4"

E. SURFACE SHALL FOLLOW GRADES PER PLANS. REMOVE CROWN, ALLOW 1-2% CROSS PITCH.

F. COMPLETED SURFACE SHALL BE OF CONSISTENT QUALITY AND SHALL NOT HAVE DEPRESSIONS OR HUMPS GREATER THAN 1/4-INCH IN 10-FEET.

3.05 INSTALLATION TOLERANCES

- A. DECOMPOSED GRANITE SURFACING THICKNESS: ALLOW FOR 20-25% COMPACTION.

1. SUBBASE COURSE: PLUS OR MINUS 1/2-INCH.

2. SURFACE COURSE: PLUS 1/4-INCH, NO MINUS.

B. DECOMPOSED GRANITE SURFACING SMOOTHNESS: PRODUCE A SURFACE SMOOTHNESS WITHIN 1/4-INCH TOLERANCE WHEN MEASURED WITH A 10-FOOT STRAIGHTEDGE.

3.06 CLEAN-UP AND PROTECTION

- A. THOROUGHLY CLEAN ALL AREAS WHERE WORK HAS OCCURRED. REMOVE FROM SITE EXCESS MATERIAL, DEBRIS AND RUBBISH.

B. TAKE ALL PRECAUTIONS NECESSARY TO PROTECT COMPLETED WORK UNTIL SUBSTANTIAL COMPLETION OF PROJECT.

END OF SECTION 321540

		INSPECTED AND RECOMMENDED FOR ACCEPTANCE	
LANDSCAPE ARCHITECT OF WORK AS-BUILT CERTIFICATE AS THE LANDSCAPE ARCHITECT OF WORK, I HEREBY CERTIFY THAT, TO THE BEST OF MY KNOWLEDGE AND BELIEF, THE IMPROVEMENTS SHOWN ON THIS SET OF CONSTRUCTION PLANS, SHEET XXXX THROUGH SHEET XXXX, HAVE BEEN INSTALLED AND CONSTRUCTED IN SUBSTANTIAL CONFORMANCE WITH THESE AS-BUILT PLANS, INCLUDING ALL APPROPRIATE STANDARDS AND ANY DISCRETIONARY APPROVAL(S) FOR THE PROJECT. Brett Allen, LLA License No. 6595, EXP. 12/31/2025		Public Works Inspector _____ Date _____	
DATE: 12/08/2025		APPROVED AS RECORD PLAN	
ISAAC ETCHAMENDY 81294 9/30/2026		DATE: _____	
CITY OF SAN MARCOS		City Drawing No. _____	
LANDSCAPE PLANS FOR: SAN ELJO HILLS PARK - DOG PARK CONSTRUCTION SPECIFICATIONS		YYXX-XXXX PROJECT NO. SDPXX-XXXX MF XXXX	
Sheet 11 of 16		FOR APPROVAL	



STANDARD PLANTING NOTES:

1.

THE WORK SHALL BE CONSTRUCTED AND MAINTAINED IN ACCORDANCE WITH THE DEVELOPER'S CITYAPPROVED PLANS, IRRIGATION AND LANDSCAPE STANDARD DRAWINGS, APPROVED MATERIALS LIST, AS WELL AS THESE STANDARD PLANTING NOTES.
2.

SOIL SAMPLES FOR AMENDMENT TESTING SHALL BE TAKEN AFTER COMPLETION OF GRADING AND PRIOR TO WEED CONTROL AND SOIL PREPARATION AT A MINIMUM OF THREE LOCATIONS APPROVED BY THE PUBLIC WORKS DEPARTMENT. TESTS SHALL BE PERFORMED BY AN APPROVED LABORATORY. TESTS PERFORMED SHALL INCLUDE, BUT ARE NOT LIMITED TO: ORGANIC MATTER CONTENT, N/P/K., PH, ELECTRICAL CONDUCTIVITY, AND PERCENT SILT, SAND, AND CLAY. TEST RESULTS AND APPLICATION RECOMMENDATIONS SHALL BE SUBMITTED TO THE PUBLIC WORKS DEPARTMENT PRIOR TO APPLICATION OF AMENDMENTS. AMENDMENTS SHALL BE APPLIED PURSUANT TO THE LABORATORY AND MANUFACTURERS RECOMMENDATIONS.
3.

CONTROL WEEDS BY WATERING FOR THREE WEEKS TO ADEQUATELY GERMINATE THE SEEDBED AND THEN APPLY A POST-EMERGENT HERBICIDE BY A LICENSED APPLICATOR AND WAIT AS DIRECTED BY THE MANUFACTURER BEFORE PLANTING.
4.

PERCOLATION TESTS SHALL BE PERFORMED ON ALL TREE PLANTING PITS. PITS SHALL BE FILLED WITH 18 INCHES OF WATER AND ALLOWED TO DRAIN COMPLETELY. PITS SHALL THEN BE FILLED WITH 12 INCHES OF WATER AND ALLOWED TO DRAIN. THE SECOND FILL MUST DRAIN AT A MINIMUM RATE OF ONE INCH PER HOUR, FOR A FOUR-HOUR DURATION.
5.

TREE WELL DRAIN SYSTEMS SHALL BE INSTALLED PURSUANT TO CITY OF SAN MARCOS STANDARD DRAWINGS WHEN PERCOLATION TESTS FAIL.
6.

THE DEVELOPER SHALL PROVIDE POSITIVE DRAINAGE IN ALL LANDSCAPE AREAS.
7.

THE DEVELOPER SHALL SCHEDULE INSPECTIONS 48 HOURS IN ADVANCE OF THE WORK BEING READY FOR INSPECTION. INSPECTIONS SHALL BE SCHEDULED BY CALLING (760) 752-7550 EXT. 3550. IF THE WORK IS NOT READY FOR INSPECTION ON THE SCHEDULED DATE AND TIME, THE DEVELOPER SHALL RESCHEDULE THE INSPECTION AS ABOVE. THE CITY MAY CHARGE THE DEVELOPER FOR RESCHEDULED INSPECTIONS AND WITHHOLD FURTHER INSPECTIONS UNTIL SUCH TIME AS THE DEVELOPER PAYS THE RE-INSPECTION FEE.
8.

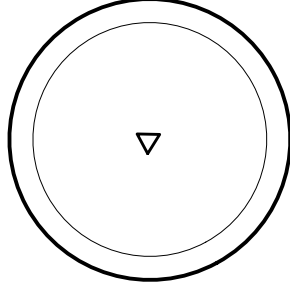
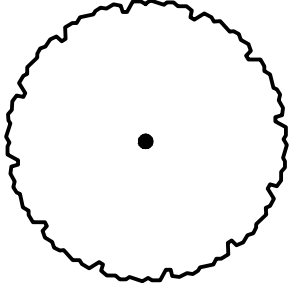
PLANTING INSPECTIONS ARE REQUIRED FOR THE FOLLOWING: A. TREE PLANTING PIT PERCOLATION TESTS (BOTH FILLS). B. PLANT MATERIAL LAYOUT PRIOR TO PLANTING. C. PLANT MATERIAL QUALITY PRIOR TO PLANTING. D. AMENDMENT VERIFICATION (PRIOR TO APPLICATION). E. PLANT MATERIAL INSTALLATION. F. PRE-MAINTENANCE PERIOD IRRIGATION COVERAGE INSPECTION (PUNCH LIST DEVELOPED). G. PRE-MAINTENANCE PERIOD PLANT MATERIAL INSPECTION (PUNCH LIST DEVELOPED). H. PRE-MAINTENANCE PERIOD FINAL PUNCH LIST COMPLETION INSPECTION. I. END OF MAINTENANCE PERIOD INSPECTION (30 DAYS PRIOR TO THE SCHEDULED END OF THE MAINTENANCE PERIOD; PUNCH LIST DEVELOPED). J. FINAL MAINTENANCE PERIOD INSPECTION (END OF MAINTENANCE PERIOD PUNCH LIST WORK COMPLETED BY DEVELOPER.
9.

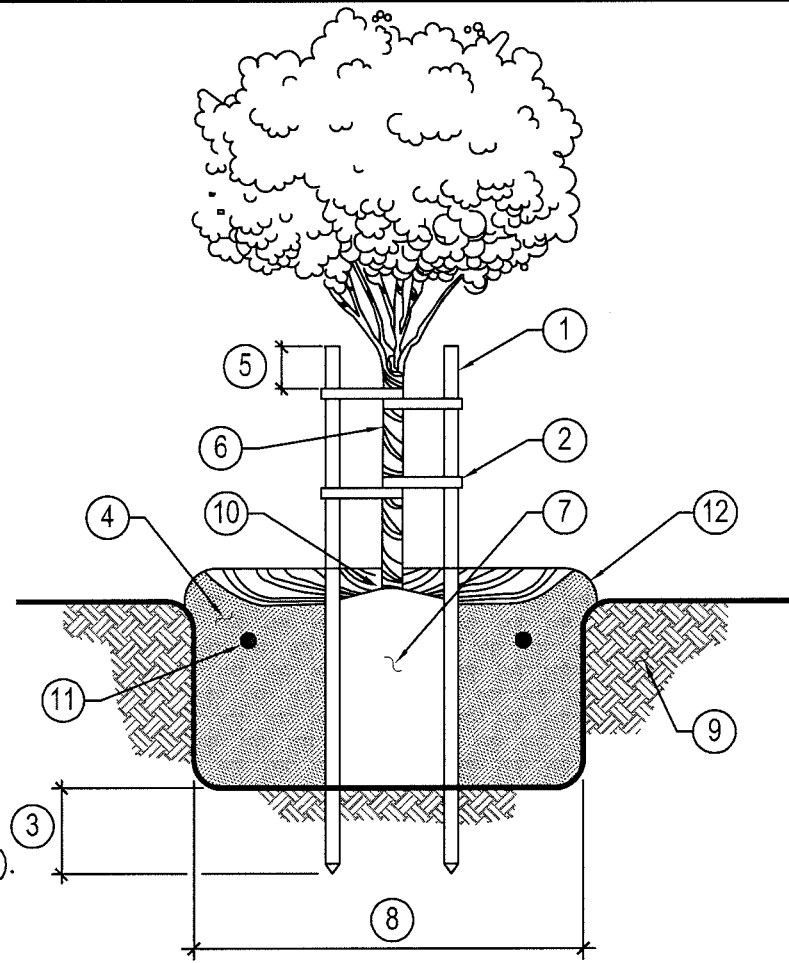
TREES SUPPLIED TO THE PROJECT SHALL MEET THE FOLLOWING MINIMUM STANDARDS: A. TREES SHALL HAVE A STRAIGHT TRUNK WITH A SYMMETRICAL CROWN. B. TREES SHALL HAVE A SUBSTANTIAL, SINGLE, CENTRAL LEADER. C. TREE BARK SHALL NOT BE DISCOLORED, SUNKEN, OR SWOLLEN AND SHALL BE FREE OF CUTS AND SCRAPES OR OTHER DAMAGE. D. TREES SHOWING GALLERIES, SUN SCALD, OR FROST DAMAGE WILL NOT BE ACCEPTED. E. THE CALIPER OF THE TREE SHALL BE IN PROPORTION TO THE ROOT BALL. F. TREES WITH GIRDLING ROOTS WRAPPING AROUND THE TRUNK OR OTHERWISE ROOT BOUND WILL NOT BE ACCEPTED. G. TREE TRUNKS MORE THAN 10 PERCENT OFF CENTER WILL NOT BE ACCEPTED. H. FRESHLY PRUNED TREES WILL NOT BE ACCEPTED.
10.

PRUNING SHALL ONLY BE PERFORMED AT THE DIRECTION OF THE LANDSCAPE INSPECTOR.
11.

PROJECTS WHICH REMAIN INACTIVE FOR ONE YEAR OR LONGER ARE SUBJECT TO ALL PLANTING STANDARDS CHANGES THAT HAVE BEEN ADOPTED BY THE CITY OF SAN MARCOS DURING THE PERIOD OF INACTIVITY.

SAN ELIJO HILLS PARK 'DOG PARK'
PLANTING LEGEND

SYMBOL	BOTANICAL NAME	COMMON NAME	SIZE	SPACING	QUANTITY	MATURE SIZE	WUCOLS ZONE	DETAILS
<div>TREES</div> <div></div>	PISTACIA CHINENSIS	CHINESE PISTACHE	36" BOX	AS SHOWN	2	30'-60" H X 30'-60" W	M	L-1, L-5a
	QUERCUS AGRIFOLIA	COAST LIVE OAK	36" BOX	AS SHOWN	1	20'-70" H X 20'-70" W	L	L-1, L-5a



LEGEND:

- 1

2" DIA. PINE STAKE (2 REQUIRED).
- 2

CINCH TIES.
(4 REQUIRED PER TREE).
- 3

24" MINIMUM.
- 4

SOIL AMENDMENTS – PER SOILS
REPORT, COMBINED WITH NATIVE SOIL.
- 5

12" MINIMUM.
- 6

TREE TRUNK.
- 7

ROOTBALL. – SET ROOT CROWN
2" ABOVE FINISH SOIL GRADE.
- 8

2X ROOTBALL WIDTH.
- 9

UNDISTURBED NATIVE SOIL.
- 10

3" DEPTH OF BARK MULCH,
2" FROM TREE TRUNK.
- 11

PLANT TABLETS PER SAN MARCOS
STD. DWG. 2/3 UP FROM PIT BOTTOM.
SEE STANDARD DETAIL L-8
- 12

4" DEEP WATER RETENTION BERM
PER CITY DIRECTION.

NOTES:

1.

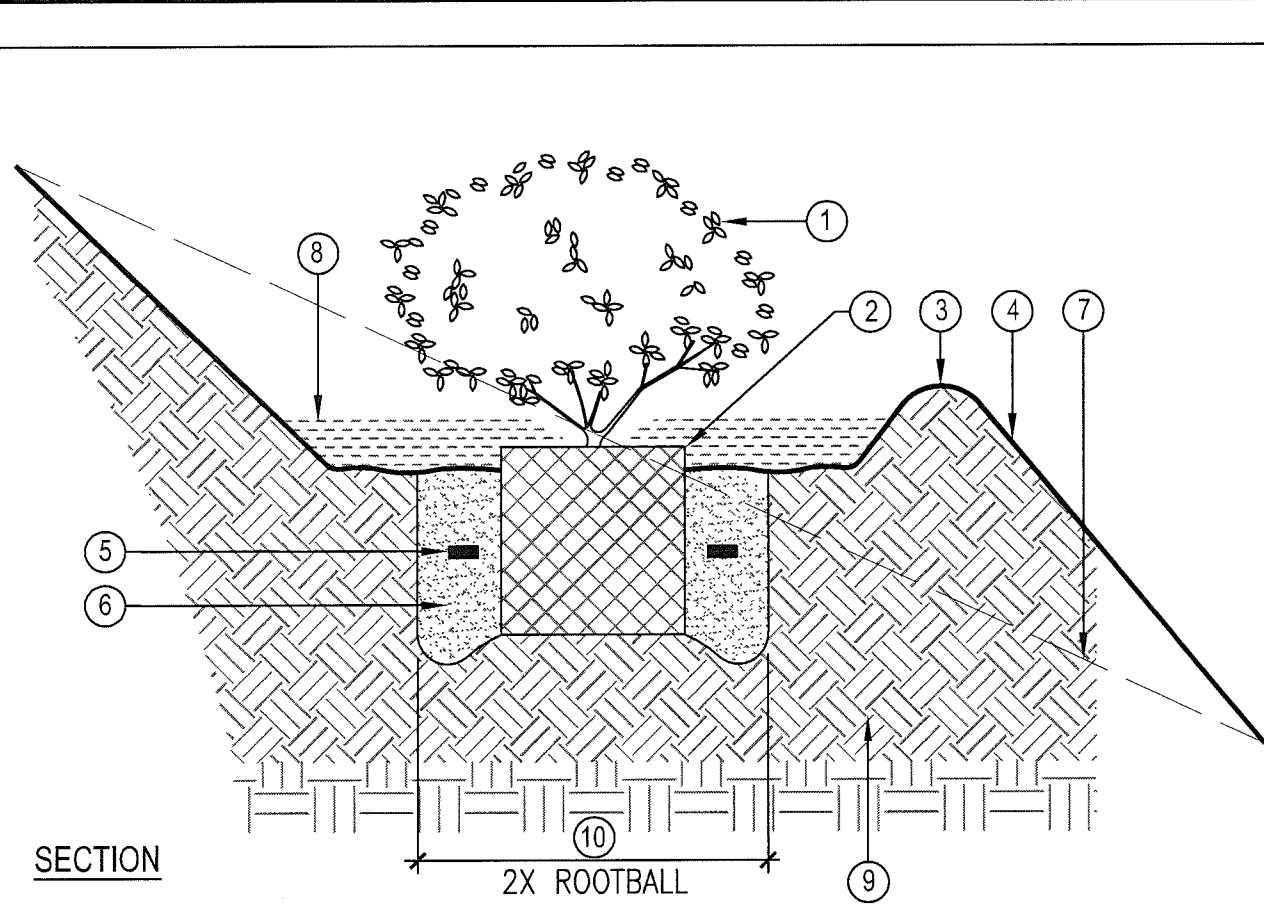
A 12" TO 18" DIAMETER CIRCLE
CUTOUT WITH A MINIMUM OF
3" BARK MULCH SHALL BE
PROVIDED FOR ALL TREES
PLANTED IN TURF AREAS.
2.

INSTALL ONE (1) TREE STAKE ON
THE UPWIND SIDE OF THE TREE AND
ONE (1) TREE STAKE ON THE
DOWNWIND SIDE OF THE TREE.
3.

ROOT BARRIER – SEE STANDARD
DETAIL L-2

* SEE CITY OF SAN MARCOS IRRIGATION & LANDSCAPE APPROVED MATERIAL LISTS

Approved By: <i>Victor Hdez</i>	Date AUG. 01, 2015	CITY OF SAN MARCOS	Scale N.T.S.
Drawn By: LCP	Date	DOUBLE STAKING (15 GALLON OR LARGER)	Drawing No. L-1



SECTION

LEGEND:

- 1

SHRUB OR TREE
- 2

SET ROOTBALL CROWN 2" ABOVE FINISH
GRADE FOR TREES; 1" ABOVE FINISH GRADE
FOR SHRUBS.
- 3

4" DEEP WATER RETENTION BERM PER
CITY DIRECTION.
- 4

PLANTING PIT FINISH GRADE.
- 5

PLANT TABLETS PER CITY OF SAN MARCOS
STANDARD DRAWING L-8.
- 6

SOIL AMENDMENTS – PER SOILS REPORT
COMBINED WITH NATIVE SOILS.
- 7

GRADIENT OF EXISTING SLOPE.
- 8

MULCH 3" DEPTH – 2" FROM TRUNK
OF TREE/SHRUB.
- 9

EXISTING SOIL.
- 10

EXCAVATE PLANTING PIT 2X THE DIAMETER
OF ROOTBALL.

* SEE CITY OF SAN MARCOS IRRIGATION & LANDSCAPE APPROVED MATERIAL LISTS

Approved By: <i>Shirley Busch</i>	Date DEC. 1, 2011	CITY OF SAN MARCOS	Scale N.T.S.
Drawn By: LCP	Date	TREE & SHRUB PLANTING ON SLOPE	Drawing No. L-5a

PLANT TABLET LEGEND

FERTILIZER APPLICATION RATE FOR PLANTS OR POTS

1 GALLON PLANT	1 TABLET	21 GRAM
5 GALLON PLANT	3 TABLETS	21 GRAM
15 GALLON PLANT	4 TABLETS	21 GRAM
24" BOX	6 TABLETS	21 GRAM
36" & 48" BOXES	8 TABLETS	21 GRAM
PALMS	8 TABLETS	21 GRAM

* SEE CITY OF SAN MARCOS IRRIGATION & LANDSCAPE APPROVED MATERIAL LISTS

Approved By: <i>Shirley Busch</i>	Date MAY 1, 2010	CITY OF SAN MARCOS	Scale N.T.S.
Drawn By: LCP	Date	PLANT TABLET LEGEND	Drawing No. L-8




DIAL TOLL FREE
1-800-422-4133
AT LEAST TWO DAYS
BEFORE YOU DIG

UNDERGROUND SERVICE ALERT OF SOUTHERN CALIFORNIA

VALLECITOS WATER DISTRICT APPROVAL OF THESE IMPROVEMENT PLANS DOES NOT COMMIT DISTRICT TO SUPPLYING WASTEWATER SERVICES TO THIS PROJECT OR GUARANTEE THAT WATER WILL BE AVAILABLE By: _____ Date: _____ JASON P. HUBBARD, P.E. DISTRICT ENGINEER R.C.E. NO. 60317 exp.: 6/30/2024 APPROVAL VALID FOR EIGHTEEN (18) MONTHS FROM DATE SIGNED		SAN MARCOS FIRE PROTECTION DISTRICT By: _____ Date: _____ JASON NAILON, FIRE MARSHAL REQUIRED FIRE HYDRANT FLOW _____ *(GPM) APPROVED FIRE HYDRANT FLOW _____ *(GPM) □ APPROVED FIRE FLOW INCLUDES MITIGATION MEASURES *GALLON PER MINUTE VALLECITOS WATER DISTRICT IS NOT RESPONSIBLE FOR MAINTENANCE, REPAIR, OR REPLACEMENT OF FIRE HYDRANTS UNLESS SPECIFIED UNDER SEPARATE AGREEMENT WITH THE JURISDICTIONAL FIRE AGENCY		CITY APPROVED CHANGES <table><thead><tr><th>Δ NO.</th><th>DESCRIPTION</th><th>AFFECTED SHEETS</th><th>AOW APP'D</th><th>APP'D BY</th><th>DATE</th></tr></thead><tbody><tr><td> </td><td> </td><td> </td><td> </td><td> </td><td> </td></tr><tr><td> </td><td> </td><td> </td><td> </td><td> </td><td> </td></tr><tr><td> </td><td> </td><td> </td><td> </td><td> </td><td> </td></tr><tr><td> </td><td> </td><td> </td><td> </td><td> </td><td> </td></tr><tr><td> </td><td> </td><td> </td><td> </td><td> </td><td> </td></tr></tbody></table>				Δ NO.	DESCRIPTION	AFFECTED SHEETS	AOW APP'D	APP'D BY	DATE																															LANDSCAPE ARCHITECT OF WORK By: _____ License No.: _____ exp.: _____ Date: _____ RECOMMENDED FOR APPROVAL By: _____ Andrew Proud, Landscape Inspection Supervisor Date: _____ APPROVED FOR CONSTRUCTION By: _____ Isaac Etchamendy, City Engineer R.C.E.: _____ exp.: _____ Date: _____		BENCH MARK Description: _____ Location: _____ Record From: _____ Datum: _____ Elev.: _____		LANDSCAPE ARCHITECT OF WORK AS-BUILT CERTIFICATE AS THE LANDSCAPE ARCHITECT OF WORK, I HEREBY CERTIFY THAT, TO THE BEST OF MY KNOWLEDGE AND BELIEF, THE IMPROVEMENTS SHOWN ON THIS SET OF CONSTRUCTION PLANS, SHEET XXXX THROUGH SHEET XXXX, HAVE BEEN INSTALLED AND CONSTRUCTED IN SUBSTANTIAL CONFORMANCE WITH THESE AS-BUILT PLANS, INCLUDING ALL APPROPRIATE STANDARDS AND ANY DISCRETIONARY APPROVAL(S) FOR THE PROJECT. DATE: 12/08/2025 BRETT ALLEN, LLA License No. 6595, EXP. 12/31/2025		INSPECTED AND RECOMMENDED FOR ACCEPTANCE Public Works Inspector _____ Date _____ APPROVED AS RECORD PLAN ISAAC ETCHAMENDY 81294 9/30/2026 DATE: _____		CITY OF SAN MARCOS LANDSCAPE PLANS FOR: SAN ELIJO HILLS PARK - DOG PARK PLANTING LEGEND, NOTES, + DETAILS YXXX-XXXX PROJECT NO. SDPXX-XXXX MF XXXX Sheet 13 of 16		City Drawing No. Pxx-xxxx	
Δ NO.	DESCRIPTION	AFFECTED SHEETS	AOW APP'D	APP'D BY	DATE																																																		

FOR APPROVAL

- DIGALERT**
- 
- DIAL TOLL FREE
1-800-422-4133
- AT LEAST TWO DAYS
BEFORE YOU DIG
- UNDERGROUND SERVICE ALERT OF SOUTHERN CALIFORNIA

VALLECITOS WATER DISTRICT		SAN MARCOS FIRE PROTECTION DISTRICT		CITY APPROVED CHANGES						License No.: _____ exp.: _____		THAT, TO THE BEST OF MY KNOWLEDGE AND BELIEF, THE IMPROVEMENTS SHOWN ON THIS SET OF CONSTRUCTION PLANS, SHEET XXXX THROUGH SHEET XXXX, HAVE BEEN INSTALLED AND CONSTRUCTED IN SUBSTANTIAL COMPLIANCE WITH THESE AS-BUILT PLANS, INCLUDING ALL APPROPRIATE STANDARDS AND ANY DISCRETIONARY APPROVAL(S) FOR THE PROJECT _____ BRETT ALLEN, LLA License No. 6595, EXP. 12/31/2025		Public Works Inspector _____ Date _____ <u>APPROVED AS RECORD PLAN</u> ISAAC ETCHAMENDY 81294 9/30/2026 DATE: _____		
APPROVAL OF THESE IMPROVEMENT PLANS DOES NOT COMMIT DISTRICT TO SUPPLYING WASTEWATER SERVICES TO THIS PROJECT OR GUARANTEE THAT WATER WILL BE AVAILABLE		By: JASON NAILON, FIRE MARSHAL Date: _____ REQUIRED FIRE HYDRANT FLOW _____*(GPM) APPROVED FIRE HYDRANT FLOW _____*(GPM) <input type="checkbox"/> APPROVED FIRE FLOW INCLUDES MITIGATION MEASURES *GALLON PER MINUTE		<u>Δ</u> NO.		DESCRIPTION		AFFECTED SHEETS	AOW APP'D	APP'D BY	DATE	Date: _____ RECOMMENDED FOR APPROVAL	By: _____ Andrew Proud, Landscape Inspection Supervisor			
By: _____ Date: _____ JASON P. HUBBARD, P.E. DISTRICT ENGINEER R.C.E. NO. 60317 exp.: 6/30/2024		VALLECITOS WATER DISTRICT IS NOT RESPONSIBLE FOR MAINTENANCE, REPAIR, OR REPLACEMENT OF FIRE HYDRANTS UNLESS SPECIFIED UNDER SEPARATE AGREEMENT WITH THE JURISDICTIONAL FIRE AGENCY										Date: _____	APPROVED FOR CONSTRUCTION		BENCH MARK	
APPROVAL VALID FOR EIGHTEEN (18) MONTHS FROM DATE SIGNED		VALLECITOS WATER DISTRICT VMD AS-BUILT										By: Isaac Etchamendy, City Engineer	Description: _____		LANDSCAPE PLANS FOR:	
PRESSURE ZONE: _____ HGL _____		By: _____ NAME (ENGINEER OF WORK) Date: _____										R.C.E.: _____ exp.: _____	Location: _____		PROJECT NO. YXXX-XXXX	
PUMP ZONE: _____		R.C.E. NO. _____ exp.: 6/30/20XX										Date: _____	Record From: _____ Datum: _____		SDPXX-XXXX MF XXXX	
															Sheet 15 of 16	

3.09. MAINTENANCE PERIOD:		PART 3 - EXECUTION		D. IRRIGATION AND IRRIGATION SYSTEM MAINTENANCE:		1. THE CONTRACTOR IS RESPONSIBLE FOR DAILY VISUAL INSPECTION OF SLOPES AND IMMEDIATELY REPORTING AREAS EXPERIENCING EROSION TO THE LANDSCAPE ARCHITECT AND/OR OWNER'S REPRESENTATIVE ON THE SAME DAY NOTICED. IF THE CONTRACTOR FAILS TO NOTIFY THE LANDSCAPE ARCHITECT AND/OR OWNER'S REPRESENTATIVE OF AREAS EXPERIENCING EROSION ON THE SAME DAY NOTICED, THEN THE CONTRACTOR ASSUMES FULL RESPONSIBILITY FOR ANY EROSION CONTROL MEASURES AND/OR REPAIRS AS DIRECTED BY THE LANDSCAPE ARCHITECT AND/OR OWNER'S REPRESENTATIVE AT NO ADDITIONAL COST TO THE OWNER.	
A. THE MAINTENANCE PERIOD SHALL LAST FOR NINETY (90) DAYS AFTER NOTIFICATION FROM THE LANDSCAPE ARCHITECT OF A SUCCESSFUL FINAL WALK THROUGH AND WILL BEGIN ONCE ALL ITEMS ON THE FINAL WALK THROUGH PUNCH LIST HAVE BEEN SATISFACTORILY ADDRESSED BY A WRITTEN STATEMENT INDICATING SUCH FROM THE LANDSCAPE ARCHITECT TO THE OWNER.		2. THE CONTRACTOR IS RESPONSIBLE FOR OBTAINING AND FOLLOWING ANY MAINTENANCE MANUALS CREATED SPECIFICALLY FOR THE PROJECT FROM THE OWNER AT THE BEGINNING OF THE MAINTENANCE PERIOD.		2. THE CONTRACTOR SHALL PLAN AND ADJUST IRRIGATION SCHEDULES FOR AUTOMATIC, HAND OR PORTABLE IRRIGATION SYSTEMS BASED ON MINIMAL WATER REQUIREMENTS WITH THE FOLLOWING CONSIDERATIONS:		2. UPON NOTIFICATION AND AGREEMENT OF THE APPLICABLE EROSION CONTROL MEASURE BY THE LANDSCAPE ARCHITECT, THE OWNER AND THE CONTRACTOR, THE CONTRACTOR IS RESPONSIBLE FOR IMMEDIATELY REPAIRING AND CORRECTING ANY PROGRESSIVE RILLING THAT MAY OCCUR.	
1. THE CONTRACTOR IS RESPONSIBLE FOR OBTAINING AND FOLLOWING ANY MAINTENANCE MANUALS CREATED SPECIFICALLY FOR THE PROJECT FROM THE OWNER AT THE BEGINNING OF THE MAINTENANCE PERIOD.		2. ONCE THE CONTRACTOR HAS FULFILLED ALL MAINTENANCE AGREEMENT OBLIGATIONS THE MAINTENANCE PERIOD WILL END SEE SECTION 320533 LANDSCAPE MAINTENANCE, FOR MAINTENANCE RESPONSIBILITIES.		A. TREES:		3. EROSION CONTROL MEASURES MAY INCLUDE BUT NOT BE LIMITED TO:	
END OF SECTION 329300				1. TREE MAINTENANCE AND CARE IS CONSIDERED ROUTINE ONGOING MAINTENANCE AND SHALL BE ACCOMPLISHED AS SPECIFIED OR AS OFTEN AS NECESSARY DURING THE MAINTENANCE PERIOD. TREE MAINTENANCE AND CARE INCLUDES, STAKING TREES, ADJUSTMENT OF TIES AND SUPPORTS, REMOVAL OF STAKES, WATERING, FERTILIZATION, PEST CONTROL, PRUNING, TURF CLEARANCE, MULCH CLEARANCE, REMOVAL OF BROKEN LIMBS AND BRANCHES, TREE REMOVAL/REPLACEMENT, AND FALL CLEANUP.		a. FILLING b. RAKING c. REDIRECTING RUNOFF d. PROPERLY PROGRAMMING IRRIGATION OPERATIONS e. REPLANTING f. PROVIDING ADDITIONAL EROSION CONTROL MATERIALS SUCH AS:	
SECTION 32 05 33 LANDSCAPE MAINTENANCE				2. THE CONTRACTOR SHALL MAINTAIN AND/OR REPLACE TREE STAKING AND GUYING AS NECESSARY AS SPECIFIED IN SECTION 329300 LANDSCAPING FOR THE DURATION OF THE MAINTENANCE PERIOD. STAKES, TIES AND SUPPORTS SHALL BE INSPECTED AND ADJUSTED MONTHLY TO PREVENT GIRDLING AND RUBBING, AND TO PROMOTE NATURAL DEVELOPMENT OF TREES. STAKES, TIES, AND SUPPORTS SHALL BE REMOVED WHEN THE TREE BECOMES CAPABLE OF SUPPORTING ITSELF.		1. JUTE MATTING 2. FILTER FABRIC 3. HAY BALES 4. HAY ROLLS 5. SILT FENCING 6. SAND BAGS 7. AND/OR OTHER EROSION CONTROL ITEMS AS REQUIRED TO MAINTAIN HEALTHY PLANT MATERIAL AND STABLE SLOPES.	
PART 1 - GENERAL				3. TREES SHALL BE PRUNED ACCORDING TO THEIR NATURAL GROWTH CHARACTERISTICS TO EVENLY FORM AND BALANCE THE TREE AND TO PROMOTE PROPER HEALTH AND GROWTH IN ACCORDANCE WITH ACCEPTED STANDARDS AND HORTICULTURAL PRACTICES OF THE NATIONAL ARBORCULTURE SOCIETY, OF THE WESTERN CHAPTER. ALL TREE MAINTENANCE MUST BE PERFORMED IN COMPLIANCE WITH ANSI Z133.1 SAFETY STANDARDS. TREE PRUNING SHALL INCLUDE ALL AREAS OF THE PROJECT, WHICH ARE PERMANENTLY AND/OR TEMPORARILY IRRIGATED FOR THE DURATION OF THE MAINTENANCE PERIOD. ALL SUCKER GROWTH SHALL BE REMOVED FROM AND AROUND THE TREES. ALL TREES ARE TO BE INSPECTED MONTHLY TO IDENTIFY PRUNING NEEDS. PRUNING OR TRIMMING SHALL BE ACCOMPLISHED AT ANY TIME DURING THE MAINTENANCE PERIOD AS REQUIRED IN ACCORDANCE WITH CONDITIONS (A) THROUGH (H) BELOW:		4. ADDITIONAL EROSION CONTROL MEASURES REQUIRED DUE TO IRRIGATION OPERATIONS PROGRAMMED BY THE CONTRACTOR THAT DID NOT TAKE INTO ACCOUNT CYCLE AND SOAK FUNCTIONS OF THE CONTROLLER WILL BE INSTALLED AND/OR REPAIRED AS DIRECTED BY THE LANDSCAPE ARCHITECT AND/OR OWNER'S REPRESENTATIVE AT NO ADDITIONAL COST TO THE OWNER.	
1.01 SUMMARY				a. REMOVE DEAD, DAMAGED OR DISEASED WOOD, OR STRUCTURALLY WEAK LIMBS THAT MAY CAUSE A SAFETY HAZARD. REMOVE INTERFERING BRANCHES, CROSSING AND RUBBING BRANCHES.		I. FREQUENCY OF MAINTENANCE OPERATIONS:	
A. THE WORK INCLUDES ALL SERVICES, LABOR, MATERIALS, TRANSPORTATION AND EQUIPMENT NECESSARY TO PERFORM THE WORK INDICATED ON THE DRAWINGS AND AS SPECIFIED. THE CONDITIONS OF THE CONTRACT AND DIVISION 1 APPLY TO THIS SECTION AS FULLY AS IF REPEATED HEREIN.				b. REMOVE BRANCHES WHICH ENDANGER ROOFS, EAVES, AND WINDOWS OR HANG WITHIN EIGHT FEET OF SIDEWALKS, DRIVEWAYS, AND WHICH OBSTRUCT TRAFFIC SIGNS OR STREETLIGHTS. THIS INCLUDES REMOVAL OF DEAD OR BROKEN BRANCHES ON THE GROUND OR STILL HANGING IN THE TREE.		TASK: SHRUB AND VINE RESTORATION AND REPLACEMENT: AS REQUIRED WEEDING: DAILY PRUNING: AS REQUIRED TREE REPLACEMENT: AS REQUIRED TREE STAKING: AS REQUIRED PESTICIDE APPLICATIONS: AS REQUIRED DEBRIS REMOVAL & DISPOSAL: AS REQUIRED IRRIGATION SYSTEM MAINTENANCE: AS REQUIRED FERTILIZER APPLICATION: AS REQUIRED FALLEN VEGETATION AND DEBRIS REMOVAL: TWICE WEEKLY REMOVAL OF DEAD ANIMALS: AS REQUIRED RE-MULCHING (MAINTAINED AT 3 INCHES): AS REQUIRED EROSION CONTROL: AS REQUIRED	
1.02 RELATED REQUIREMENTS:				c. PROVIDE CLEARANCE FOR BUSES, MOVING VANS AND SIMILAR VEHICLES ALONG STREETS.		J. AT THE END OF THE ONE HUNDRED TWENTY (120) DAY MAINTENANCE PERIOD, THE CONTRACTOR SHALL REQUEST A POST-MAINTENANCE WALK THROUGH WITH THE LANDSCAPE ARCHITECT. PRIOR TO REQUESTING THIS WALK THROUGH THE FOLLOWING REQUIREMENTS MUST BE ENTIRELY SATISFIED:	
A. SECTION 32 93 00 LANDSCAPING				d. ELIMINATE AND PREVENT GROWTH INTO ELECTRICAL OR TELEPHONE TRANSMISSION LINES. ANTICIPATE THE EFFECTS OF WIND ON BRANCHES, WHICH MIGHT FALL ON TRANSMISSION LINES. SHAPE THE ENTIRE TREE RATHER THAN NOTCH THE TOP.		8. ANY OUTSTANDING MAINTENANCE ITEMS THAT WERE PREVIOUSLY DIRECTED TO BE COMPLETED BY THE LANDSCAPE ARCHITECT OR OWNER'S REPRESENTATIVE.	
1.03 DEFINITIONS:				e. PREVENT GROWTH OF TREES IN FRONT OF WINDOWS, OVER ENTRANCEWAYS AND WALKWAYS AND WHICH WILL OBSTRUCT VISION AT STREET INTERSECTIONS.		K. PRELIMINARY POST MAINTENANCE WALK THROUGH: ONCE THE ABOVE REQUIREMENTS HAVE BEEN MET A PRELIMINARY POST MAINTENANCE WALK THROUGH MAY BE SCHEDULED. AT THE PRELIMINARY POST MAINTENANCE WALK THROUGH, THE FOLLOWING PROCEDURES WILL BE USED:	
A. PESTICIDE: INCLUDES ANY OF THE FOLLOWING:				f. REMOVE PARTIALLY ATTACHED BROKEN LIMBS AND BRANCHES FROM TREES REGARDLESS OF DIAMETER OR LENGTH. PROVIDE STAKES OR BRACES AS REQUIRED FOR FUTURE PROTECTION.		1. CONTRACTOR MUST HAVE (2) TWO PERSONNEL AVAILABLE WITH RADIO COMMUNICATION FOR THE ENTIRE LENGTH OF THE WALK THROUGH.	
4. FUMIGANT				g. "SKIRTING-UP" AND "POLLARDING" A TREE IS PROHIBITED.		2. A VISUAL WALK THROUGH OF THE ENTIRE LANDSCAPE AREA WILL TAKE PLACE CONSISTING OF AN EXAMINATION OF PLANTING AREAS AND NOTING ANY REMAINING MAINTENANCE ITEMS TO BE COMPLETED.	
5. HERBICIDE				h. TOPPING OF TREES IS PROHIBITED.		3. ONCE THE PRELIMINARY POST MAINTENANCE WALK THROUGH HAS BEEN COMPLETED, THE LANDSCAPE ARCHITECT SHALL PREPARE A PUNCH LIST OF OUTSTANDING ITEMS TO BE COMPLETED AND WILL PROVIDE A COPY OF THIS LIST TO THE OWNER AND CONTRACTOR FOR REVIEW AND USE. IT IS THE CONTRACTOR'S RESPONSIBILITY TO REPAIR, REPLACE, AND ADJUST ALL ITEMS ON THE PUNCH LIST PRIOR TO REQUESTING A FINAL POST MAINTENANCE WALK THROUGH.	
6. INSECTICIDE				C. WEEDS, RODENT AND PEST CONTROL:		L. FINAL POST MAINTENANCE WALK THROUGH: BEFORE COMMENCEMENT OF A FINAL POST MAINTENANCE WALK THROUGH, EACH ITEM ON THE PRELIMINARY POST MAINTENANCE WALK THROUGH PUNCH LIST MUST BE THOROUGHLY SATISFIED, ADDRESSED, AND RESOLVED BY THE CONTRACTOR. ONCE THE ABOVE REQUIREMENT HAS BEEN MET A FINAL POST MAINTENANCE WALK THROUGH MAY BE REQUESTED. AT THE FINAL POST MAINTENANCE WALK THROUGH, THE FOLLOWING PROCEDURES WILL BE USED:	
7. FUNGICIDE				1. WEED AND PEST CONTROL SHALL BE PERFORMED TO PREVENT ENCROACHMENT OF UNDESIRABLE VEGETATION AND NOXIOUS WEEDS, AND INFESTATION OF PEST (RODENT, INSECT AND FUNGUS) INTO ESTABLISHED LANDSCAPES, INCLUDING LAWNS AND AROUND TREES, SHRUBS, FLOWER BEDS, ETC. NOXIOUS WEEDS IN LANDSCAPED AND NATURAL GROWTH AREAS, PLANT BEDS AND LANDSCAPED AREAS SHALL NOT BE ALLOWED TO ESTABLISH THEMSELVES AND BE MAINTAINED WEED FREE. ADDITIONALLY, WEED CONTROL IS TO BE PERFORMED TO ELIMINATE GRASS AND WEEDS IN CRACKS AND JOINTS ON ALL PAVED AND CONCRETED AREAS. WEED CONTROL IS TO BE PERFORMED TO PREVENT THE ENCROACHMENT OF VEGETATION INTO PERIMETER FENCES AND FIRE BREAKS. RODENT CONTROL SHALL BE PERFORMED AS REQUIRED TO MAINTAIN HEALTHY VIGOROUS PLANT GROWTH. LIVE OR DEAD RODENTS SHALL BE REMOVED WITHIN 24 HOURS FROM THE PROJECT PROPERTY AND PROPERLY DISPOSED OF. TREES, SHRUBS, TURF AND VEGETATION SHALL BE PROTECTED FROM ALL VARIETIES OF INSECT AND RODENT DAMAGE. PESTICIDES MAY BE USED TO CONTROL PESTS. PESTICIDES AND HERBICIDES SHALL BE USED IN A MANNER WHICH WILL NOT AFFECT LANDSCAPE PLANTS HEALTH.		1. CONTRACTOR MUST HAVE (2) TWO PERSONNEL AVAILABLE WITH RADIO COMMUNICATION FOR THE ENTIRE LENGTH OF THE WALK THROUGH.	
8. RODENT REPELLENTS.				2. ALL PESTICIDES, INCLUDING HERBICIDES, INSECTICIDES, FUNGICIDES, ETC., SHALL BE APPLIED ONLY BY PERSONS HOLDING A VALID STATE LICENSE FOR EACH CATEGORY OF PEST CONTROL WORK INVOLVED. ANY REQUIRED STATE, COUNTY, OR LOCAL PERMITS FOR POSSESSION, PROCUREMENT, OR USE OF ANY PESTICIDE SHALL BE OBTAINED AND COMPLIED WITH AT NO ADDITIONAL EXPENSE TO THE OWNER.		2. ONLY THOSE ITEMS AS INDICATED ON THE PRELIMINARY POST MAINTENANCE WALK THROUGH PUNCH LIST WILL BE ADDRESSED. THIS VISUAL WALK THROUGH WILL CONSIST OF WALKING THROUGH THE PUNCH LIST ITEMS CREATED AT THE TIME OF THE PRELIMINARY POST MAINTENANCE WALK THROUGH, AND EXAMINING OUTSTANDING ITEMS. ANY REMAINING DEFICIENCIES IN THE MAINTENANCE OF THE WETLANDS MITIGATION WILL BE NOTED.	
B. PLANTING BED: AN AREA COMPRISED OF TREES, SHRUBS, FLOWERS, OR GROUND COVER, EXCLUDING GRASS.				3. ALL PESTICIDES SHALL BE PROCURED, TRANSPORTED, STORED, HANDLED, AND APPLIED IN STRICT ACCORDANCE WITH THE MANUFACTURER'S LABEL, WHICH SHALL BE REGISTERED WITH THE ENVIRONMENTAL PROTECTION AGENCY AND THE STATE OF CALIFORNIA. THE CONTRACTOR SHALL COMPLY WITH THE REQUIREMENTS OF THE FEDERAL INSECTICIDE, FUNGICIDE, AND RODENTICIDE ACT, 40 CFR 170-171, COR TITLE 3, AND COR TITLE 8. A PESTICIDE CONTAINER SHALL BE MANAGED IN ACCORDANCE WITH THE REQUIREMENTS OF CCR TITLE 3, SECTION 6884 AND DISPOSED OF IN ACCORDANCE WITH CCR TITLE 22. EACH PESTICIDE FORMULATION SHALL BE REGISTERED FOR USE UNDER THE PARTICULAR ENVIRONMENTAL CONDITIONS UNDER WHICH IT WAS APPLIED. THE CONTRACTOR SHALL EXERCISE EXTREME CARE TO PREVENT ANY DAMAGE OR ILLEGAL CONTAMINATION BY PESTICIDES TO VEGETATION, WATER, FISH, ANIMALS, AND HUMANS. THE CONTRACTOR SHALL BE HELD RESPONSIBLE AND LIABLE FOR ALL DAMAGE, CONTAMINATION, AND EFFECTS RESULTING FROM CONTRACTOR'S PESTICIDE USE.		3. ONCE THE FINAL POST MAINTENANCE WALK THROUGH IS COMPLETED AND ANY OUTSTANDING ITEMS CREATED ON THE FINAL PUNCH LIST HAVE BEEN ADDRESSED THE MAINTENANCE PERIOD MAY END. ANY ADDITIONAL WALK THROUGH REQUIRED DUE TO CONTRACTOR'S INABILITY TO ADDRESS ALL ISSUES ON THE PUNCH LISTS DESCRIBED ABOVE WILL BE PROVIDED AT THE CONTRACTOR'S EXPENSE.	
1.04 DELIVERY, STORAGE AND HANDLING OF MATERIALS FOR PERMANENTLY IRRIGATED SLOPES AND FLAT AREAS:				4. PESTICIDE SPRAYING SHALL BE PERFORMED ONLY ON STILL DAYS AND WILL			