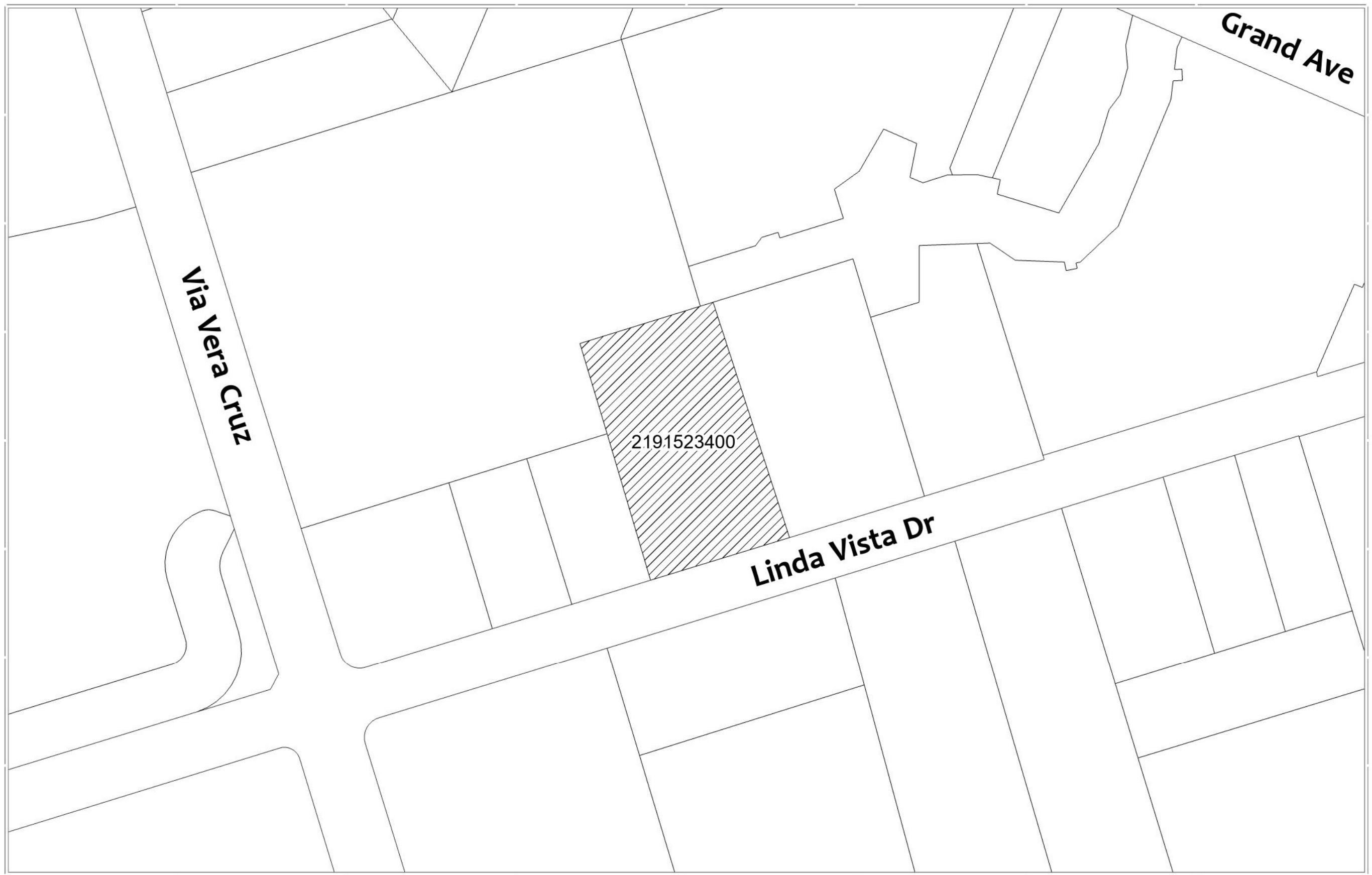




## **ATTACHMENT 3**

### **Exhibit B – Annexation Boundary Map for CFD No. 2011-01 – Annexation No. 28**

**BOUNDARY MAP**  
**COMMUNITY FACILITIES DISTRICT NO. 2011-01**  
**(CONGESTION MANAGEMENT)**  
**OF THE CITY OF SAN MARCOS**  
**ANNEXATION NO. 28**  
**EXHIBIT "B"**



FILED IN THE OFFICE OF THE CITY CLERK THIS \_\_\_\_\_ DAY OF \_\_\_\_\_ 2023.

\_\_\_\_\_  
PHILLIP SCOLLICK  
CITY CLERK  
CITY OF SAN MARCOS, STATE OF CALIFORNIA

I HEREBY CERTIFY THAT THE MAP SHOWING BOUNDARIES AND TERRITORIES TO BE ANNEXED TO COMMUNITY FACILITIES DISTRICT NO. 2011-01, (CONGESTION MANAGEMENT), CITY OF SAN MARCOS, COUNTY OF SAN DIEGO, STATE OF CALIFORNIA, WAS APPROVED BY THE CITY COUNCIL OF THE CITY OF SAN MARCOS AT A REGULAR MEETING THEREOF HELD ON THE \_\_\_\_\_ DAY OF \_\_\_\_\_, 2023 BY ITS RESOLUTION NO. 2023-\_\_\_\_\_.

\_\_\_\_\_  
PHILLIP SCOLLICK  
CITY CLERK  
CITY OF SAN MARCOS, STATE OF CALIFORNIA

FILE NO. 2023-\_\_\_\_\_

FILED THIS \_\_\_\_\_ DAY OF \_\_\_\_\_, 2023 AT \_\_\_\_\_ O'CLOCK IN BOOK \_\_\_\_\_, PAGE \_\_\_\_\_ OF MAPS OF ASSESSMENT AND COMMUNITY DISTRICTS IN THE OFFICE OF THE COUNTY RECORDER OF THE COUNTY OF SAN DIEGO, STATE OF CALIFORNIA.

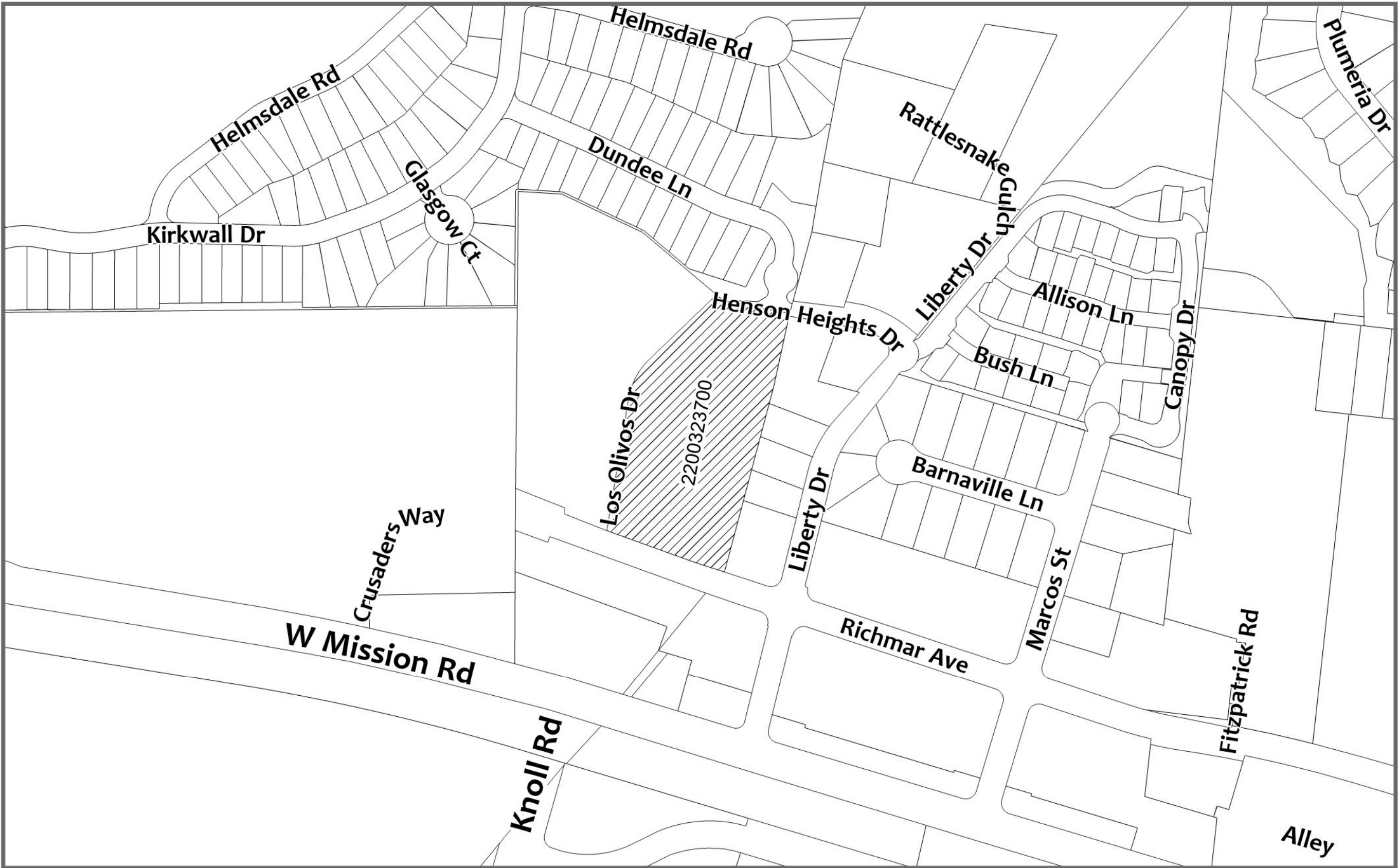
JORDAN Z. MARKS,  
COUNTY RECORDER

\_\_\_\_\_  
BY: DEPUTY COUNTY RECORDER

**Legend**  
 ANNEXATION BOUNDARY

# BOUNDARY MAP

COMMUNITY FACILITIES DISTRICT NO. 2011-01  
(CONGESTION MANAGEMENT)  
OF THE CITY OF SAN MARCOS  
ANNEXATION NO. 28  
EXHIBIT "B"



## Legend

 ANNEXATION BOUNDARY