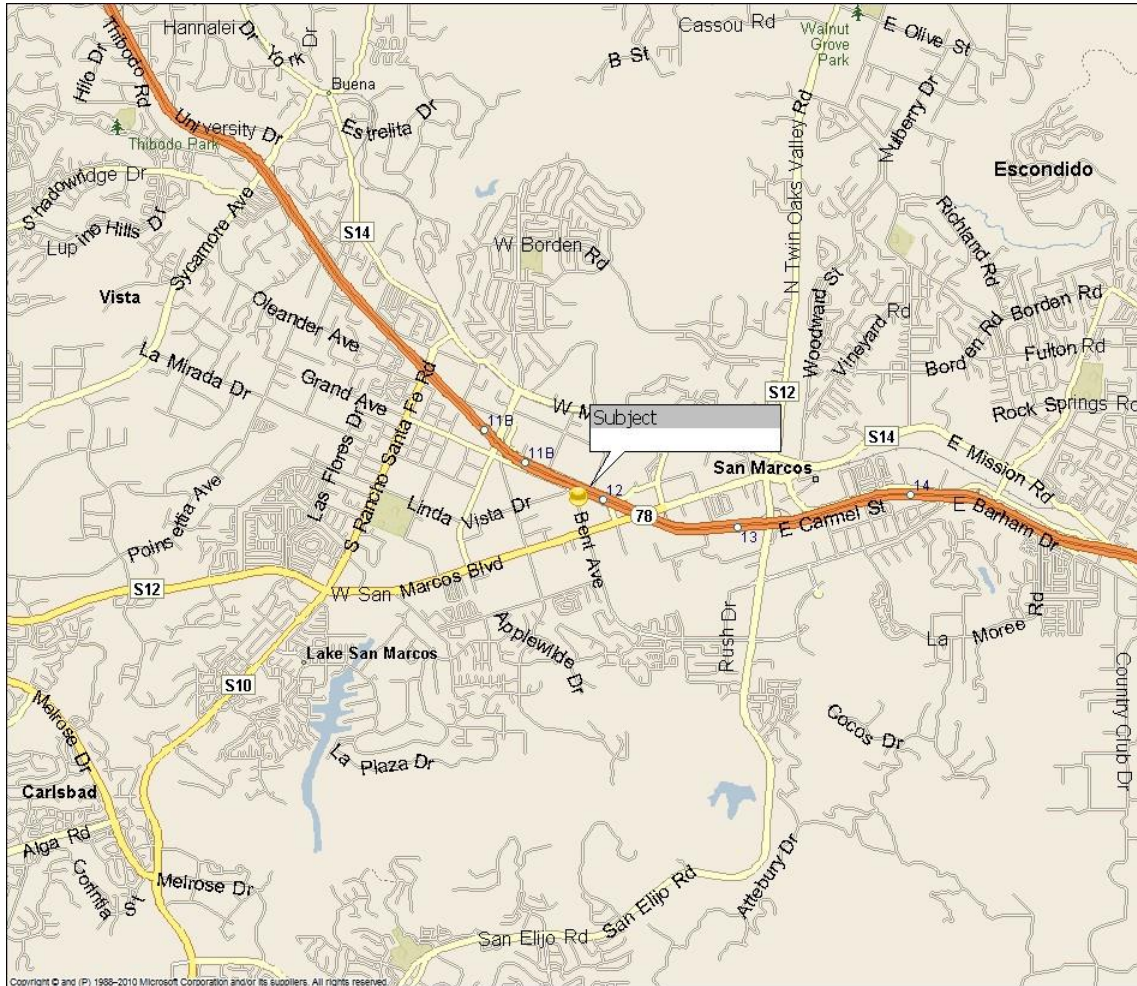


SURROUNDING AREA MAP

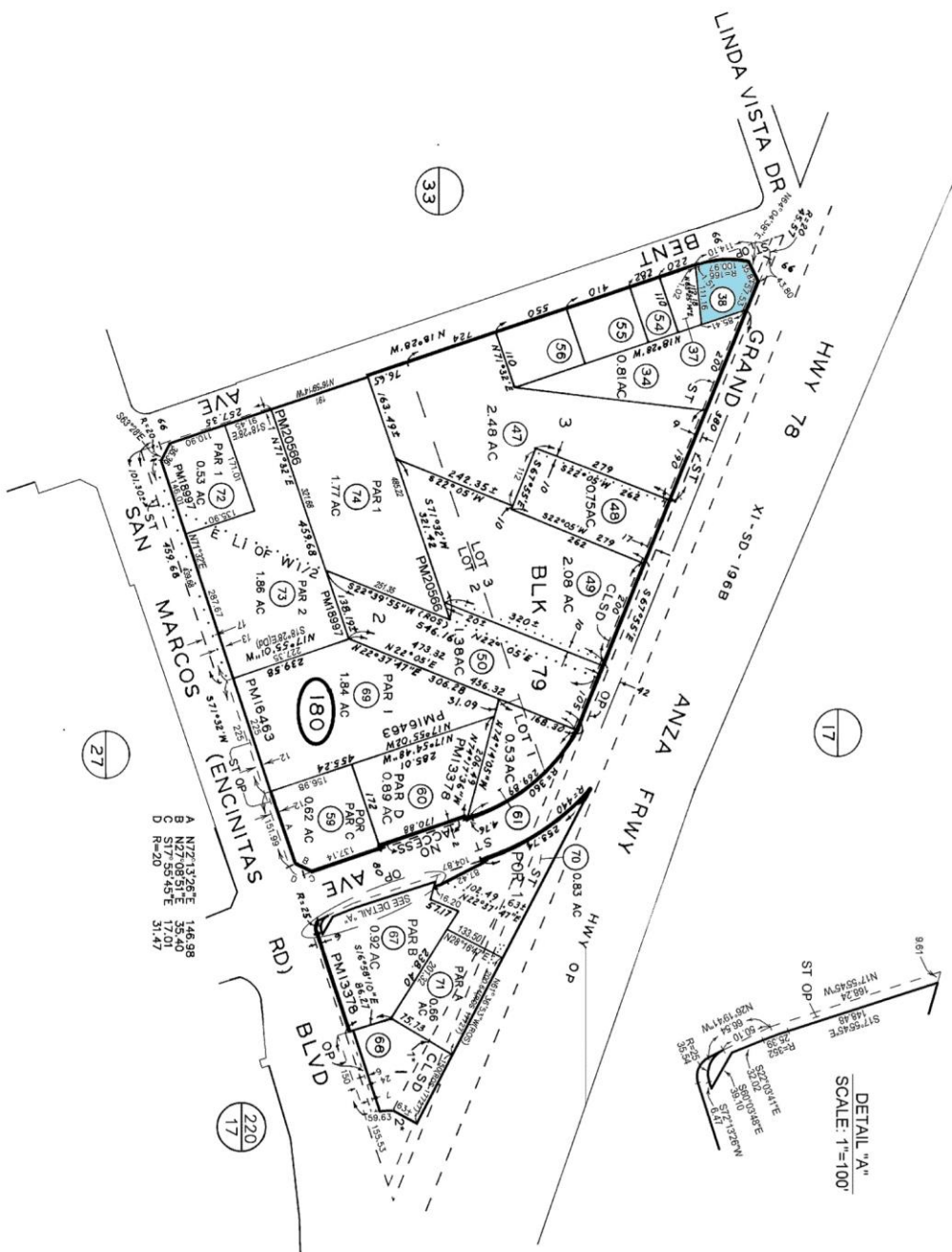


A Parcel of Vacant Land Located at the Southeast Corner of Bent and Grand Avenues

219 - 18

 $1''=200'$

DETAIL "A"
SCALE: 1"=100'



SAN DIEGO COUNTY
ASSESSOR'S MAP
BOOK 219 PG 18

THIS MAP WAS PREPARED FOR ASSESSMENT PURPOSES ONLY. NO LIABILITY IS ASSUMED FOR THE ACCURACY OF THE DATA SHOWN. ASSESSOR'S PARCELS MAY NOT COMPLY WITH LOCAL SUBDIVISION OR BUILDING ORDINANCES.

MAP 806 - RANCHO LOS VALLECITOS DE SAN MARCOS
ROS 12823, 14663, 16707, 17727

DATE 11-25		CHANGES		BY 219-18	
NO	DESCRIPTION	AMOUNT	DATE	NO	DESCRIPTION
180	SALE	51,445.55	91	47323	SALE
22	SALE	69	92	47345	SALE
68	SALE	98	4437		
64	SALE	706.71	01	1336	SALE
28	SALE	02	4649		
38	SALE	02	4726		
28	SALE	724.73	03	1359	SALE
70	SALE	03	4743		
59	SALE	04	4613		
59	SALE	04	4656		
67	SALE	06	4656		
28	SALE	09	1650		
28	SALE	74	09	1650	

Aerial View

A Parcel of Vacant Land Located at the Southeast Corner of Bent and Grand Avenues

